



INSTALLATION INSTRUCTIONS

5" Tachometer

Part Number P5155500
P5155975



QUESTIONS:

If after completely reading these instructions you have questions regarding the operation or installation of your instrument(s), please contact Mopar Technical Support at **(888) 528-HEMI**.

Read instruction thoroughly to verify all required parts are there before installing this product.

For Tachometer

- 2- Mounting Screws
- 1- Light Cover-Yellow

Contents:

INTRODUCTION

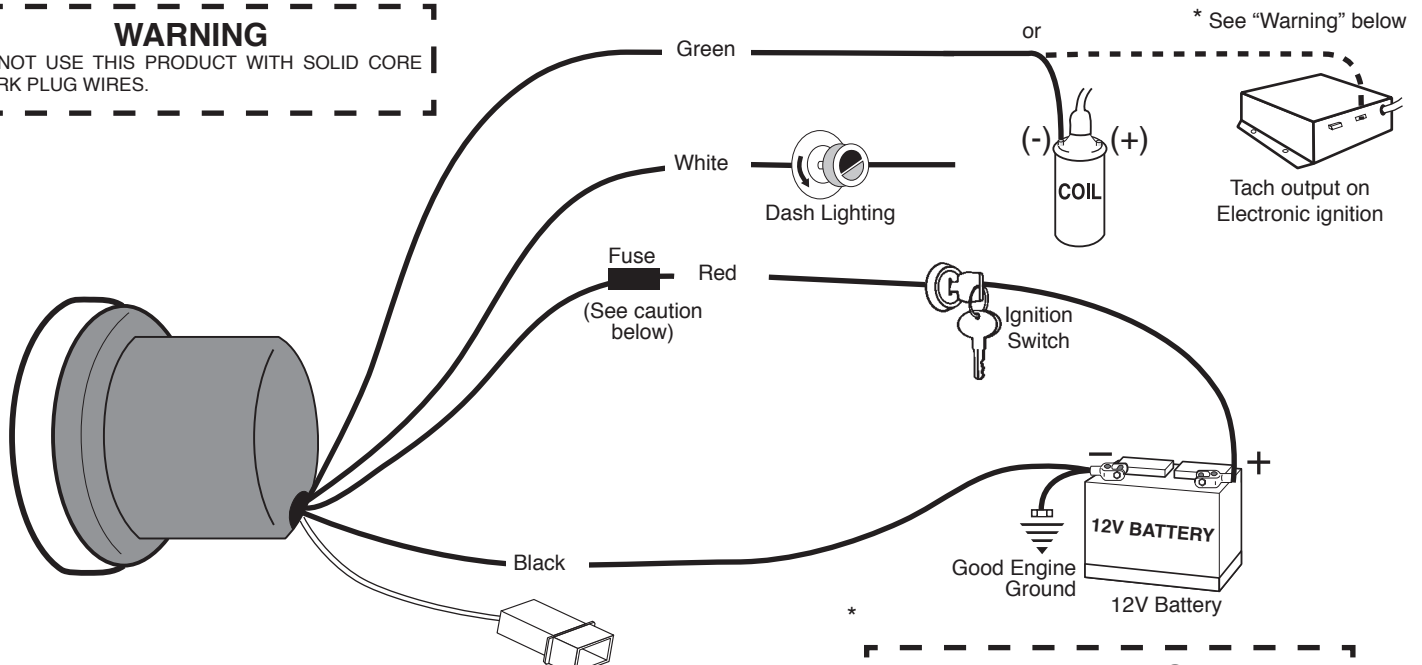
- Any Auto Meter Shift-Lite™, or Quick-Lite™ Shift-Lite can be used with tachs equipped with a black, Shift-Lite connector.

NOTE 1: This tachometer has an air core meter. With power off, it is normal for the pointer to leave zero. When 12V power is applied, the pointer will move to the correct position.

1. WIRING

WARNING

DO NOT USE THIS PRODUCT WITH SOLID CORE SPARK PLUG WIRES.



* See "Warning" below

CAUTION!!!

As a safety precaution the RED wire of this product should be fused before connecting it to the positive (+) side of switched power source. We recommend using a 4 Amp, 3AG fast-acting type cartridge fuse (Littlefuse® #312 004 or an equivalent) inline with the RED wire of our product for tachs that use a Shift-Lite. For tachs without a Shift-Lite we recommend using a 1Amp 3 AG fast-acting type cartridge fuse (Littlefuse® #312 001 or an equivalent).

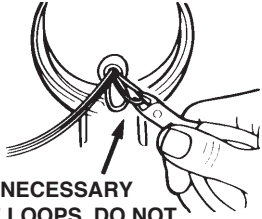
To Shift-Lite (Optional)

WARNING

Warranty will be void if connected to coil when using an aftermarket ignition box such as, but not limited to products from the following manufacturers: MSD, Crane, Jacobs, Mallory, Holley, Etc.. Prior to installation of your tachometer, check with the ignition box manufacturer for recommended tachometer signal location.

* See autometer.com/tech_installation.aspx for specific vehicle information.

2. CALIBRATION FOR MODEL P5155500



CLIP NECESSARY WIRE LOOPS. DO NOT PUSH WIRES INTO CASE.

* If you are unsure of your vehicle's pulse(s) per revolution or specific calibration requirements, contact Auto Meter Tech Support at (815) 899-0801 or go to <http://hp.autometer.com/techtips/.html> for information.

8 CYL. (4 Pulse) — NO adjustment is necessary.

6 CYL. (3 Pulse) — Clip BROWN wire loop only. Insulate with electrical tape.

4 CYL. (2 Pulse) — Clip BLUE wire loop only. Insulate with electrical tape.

4 CYL. (1 Pulse) — Clip BROWN and BLUE wire loops. Insulate with electrical tape.

NOTE:

MODEL P5155975 IS FACTORY CALIBRATED

WARNING

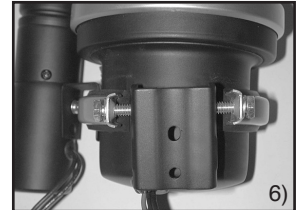
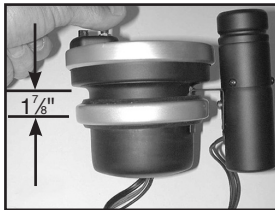
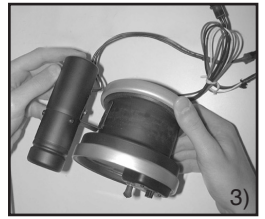
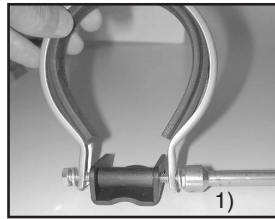
Check with engine builder for maximum recommended safe shift point before setting shift point on tachometer. Failure to do this could lead to over-revving of engine, causing serious damage to engine and car.

IMPORTANT NOTE

This tach has an air core meter movement. The tach pointer may not always rest at zero. This is normal. When 12v power is supplied, pointer will position to the correct RPM.

Mounting (Shift-Lite model shown)

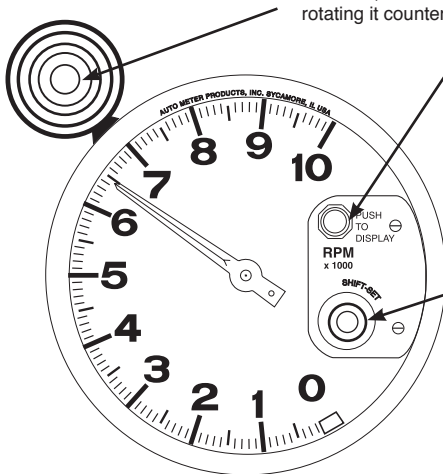
- 1) Loosen both bolts holding the shock strap to the mounting foot. Back both bolts out until each is only one or two turns into the spacer.
- 2) Pass tach wires through shock strap assembly and slide tach casing into shock strap assembly.
- 3) Position Shift-Lite mounting bracket under shock strap as shown in image. Adjust Shift-Lite tach, and mounting base to desired positions (see figure 4 for recommended shock strap position), and tighten bolts holding mounting foot to shock strap to secure the assembly.
- 4) Make sure rubber section of shock strap seats properly to ensure a proper fit. Check to make sure shock strap is approximately $1\frac{7}{8}$ " (1.875") between center line of strap and step of tachometer casing for best mounting. For external Shift-Lite models, plug shift light into tachometer connector. Plug in directional, do not force fit!
- 5) Recommended placement of external Shift-Lite is at 10 o'clock position. It is possible to place Shift-Lite in other positions in accordance with driver preference and vehicle mounting requirements.
- 6) The special design of the tachometer base allows for a variety of mounting possibilities. Attach the base using screws provided or use a pop rivet tool.



Note: Installation images shown may be different from your actual model.

Shift-Lite™ TACHOMETER

Shift-Point Selection



Shift-Lite: For shift-Lite bulb replacement, remove three screws on light. The bulb, located in the rear section, is easily removed by pushing and rotating it counter-clockwise. Replace with #1076 automotive bulb.

Display Button: Depressing red button activates pointer to display Shift-Set RPM while setting or verifying shift-point.

Shift-Set: Depress the Shift-Set knob and turn the knob until the pointer indicates the desired shift RPM. This is exactly where the Shift-Lite will turn on.

1. Push and hold red button. Pointer will display the tachometer's shift-point and the Shift Lite will activate.
2. To set your desired shift-point, continue depressing the red button, then push and turn the Shift-Set knob until the pointer reaches the desired RPM.
3. To double check, push red set button-- pointer will indicate your shift-point.
4. During normal tachometer operation, the Shift-lite will activate at the exact same RPM that the pointer indicates when red set button is depressed.

Installation Tips

1. Mount tach base firmly to reduce vibration, wear and tear.
2. Avoid contact of the tach with windshield or other objects to maintain rubber shock absorbing feature.
3. A 12 V power source **MUST** be used to power this tachometer.
A 12 V motorcycle battery is a good alternative for cars without batteries.
A battery with minimum 5 amp hour rating is recommended.
4. Avoid connecting tach power and ignition power leads together.
Use separate battery leads for ignition and tach to avoid excess voltage drop.
5. Wherever possible, solder wire connections and avoid crimp-type connectors.
This will minimize loose connections that could cause problems later.
6. Make sure you have a good ground to engine and battery negative terminal.
7. Wire installations should be neat and tied down to prevent tugging and fraying of wires at connections.

Trouble Shooting

If your tach does not function properly after installation check the following:

1. Are all electrical connections correct and tight?
2. If neither tach nor dial light work, check ground and 12V power connections.
3. Disregard tach readings that occur before engine is started.
4. If problems persist try tach on another vehicle with the same ignition.
5. For changes in ignition type, contact a service representative from Auto Meter.
6. Ignition manufacturers recommend that the ignition and coil be matched according to criteria which they establish (often that the ignition and coil be products of the same company). If they are mismatched, minor malfunctions may occur, showing as erratic readings on the tach. Mismatching coil and ignition types is often the cause of incorrect tach performance.

MOPAR PERFORMANCE PARTS ARE SOLD "AS IS," WITHOUT ANY WARRANTY WHATSOEVER.

Implied warranties, including warranties of merchantability or fitness for a particular purpose, are excluded. The entire risk as to quality and performance of such parts is with the buyer. Should such parts prove defective following their purchase, the buyer and not the manufacturer, distributor or retailer, assumes the entire cost of all necessary servicing or repair. Chrysler, Dodge, and Jeep® vehicle and parts warranties are voided if the vehicle or parts are used for competition or if they fail as a result of modification.