



INSTALLATION INSTRUCTIONS Replacement Pillar



2650-1769-00 Rev. A

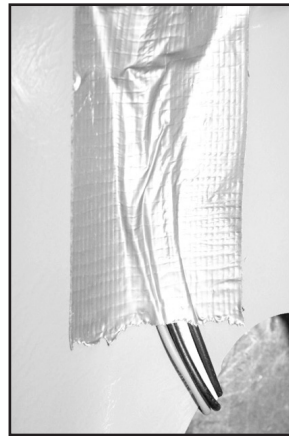
Pillar installation Directions:

Read directions before starting installation.

- 1) Remove Stock Pillar by removing the screw located under the cap(s) of pillar handle. (Photo 1)
- 2) Install Gauges in new pillar.
- 3) Tape or secure gauge wiring to back of pillar. (Photo 2)
- 4) Install new pillar in place of old pillar.
- 5) Use provided screw to hold pillar in place:
 - Make sure screw is aligned with factory hole to avoid cross threading
 - Don't over tighten screw (Photo 3)



Dodge Ram Shown (Photo 1)



(Photo 2)

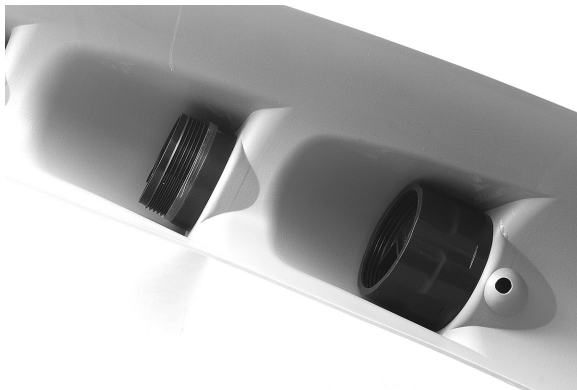


(Photo 3)

Note: If any gauge fits loosely, you may try one of the following procedures.

- Install the spin-on gauge retention brackets if included, and if there is room for the spin on bracket. (reference right side of picture A) Sometimes there may not be room for this bracket. In this case, refer to the next step.
- Wrap the tape around the case one time, from just behind the bezel, and overlapping slightly over the threads. (reference left side of picture A and also picture B)

Picture A



Picture B



Pro Pods One Year Limited Warranty

Pro Parts warrants to the consumer that all ProPod products will be free from defects in material and workmanship. Products that fail will be repaired or replaced at Pro Parts option to the consumer, when determined by Pro Parts that the product failed due to defects in material or workmanship. This warranty is limited to the repair or replacement of parts in the ProPod Product and the necessary labor done by Pro Parts to effect the repair or replacement of the ProPod product. In no event shall this warranty exceed the original purchase price of the ProPod Product nor shall Pro Parts be responsible for special, incidental or consequential damages or costs incurred due to the failure of this product. Warranty claims to Pro Parts must be transportation prepaid and accompanied with proof of purchase. This warranty applies only to the original purchaser of product and is non-transferable. Improper use or installation, accident, water damage, abuse, unauthorized repairs or alterations voids this warranty. Pro Parts disclaims any liability for consequential damages due to breach of any written or implied warranty on all products manufactured by Pro Parts.

FOR SERVICE CONTACT: Pro Parts 413 W. Elm St., Sycamore, IL 60178 USA (866)248-6357 or
Email us at service@autometer.com