

Component Box Breakdown:**Part # C19350**

Item #	Description	Qty
GM1935MS-S	STRUT SPACER, FRONT, 3.5	2
GM1935UCA-L	UPPER CONTROL ARM, DR	1
GM1935UCA-R	UPPER CONTROL ARM, PA	1
H-BOX C19350P	HDWR BOX: C19350P	1

Part # C19350PB

Item #	Description	Qty
GM1935MS-S	STRUT SPACER, FRONT, 3.5	2
GM1935UCA-L	UPPER CONTROL ARM, DR	1
GM1935UCA-R	UPPER CONTROL ARM, PA	1
H-BOX C19350P	HDWR BOX: C19350P	1
B8517 (REAR)	BLACK MAX SHOCK W/BLK BOOT	2

Part # C19350PH

Item #	Description	Qty
GM1935MS-S	STRUT SPACER, FRONT, 3.5	2
GM1935UCA-L	UPPER CONTROL ARM, DR	1
GM1935UCA-R	UPPER CONTROL ARM, PA	1
H-BOX C19350P	HDWR BOX: C19350P	1
H7017 (REAR)	HYDRO SHOCK W/RED BOOT	2

Part # C19350PM

Item #	Description	Qty
GM1935MS-S	STRUT SPACER, FRONT, 3.5	2
GM1935UCA-L	UPPER CONTROL ARM, DR	1
GM1935UCA-R	UPPER CONTROL ARM, PA	1
H-BOX C19350P	HDWR BOX: C19350P	1
M9517 (REAR)	M95 MONOTUBE SHOCK	2

Part # C19350PN

Item #	Description	Qty
GM1935MS-S	STRUT SPACER, FRONT, 3.5	2
GM1935UCA-L	UPPER CONTROL ARM, DR	1
GM1935UCA-R	UPPER CONTROL ARM, PA	1
H-BOX C19350P	HDWR BOX: C19350P	1
N8017 (REAR)	NITRO SHOCK W/RED BOOT	2

Part # C19350KX

Item #	Description	Qty
C19350	COMPONENT BOX: C19350	1
A2017	ADX 2.0 REMOTE RES SHOCK	2

Hardware Box Breakdown:**Part # H-BOX C19350P**

Item #	Description	Qty
RBF20	REAR BLOCK, 2 FLAT	2
916X212X1012U	9/16 X 2-1/2 X 10-1/2 U-BOLT	4
HB-916	HDWR BAG: 9/16 N/I LOCK NUT	1
HB-C19350	HDWR BAG: C19350	1
I-C19350	INST SHEET: C19350	1

Hardware Bag Breakdown:**Part # HB-916**

Item #	Description	Qty
916FTN	9/16 FINE THREAD N/I LOCK NUT	8

Part # HB-C19350

Item #	Description	Qty
10MMX1.5NFN	10MM X 1.5 N/I FLANGE NUT	6
10MMPN	10MM X 1.5 PUSH NUT	1
14CTN	1/4 COARSE THRD N/I LOCK NUT	2
14SAEW	1/4 SAE WASHER	2

Component Box Breakdown:

Part # C19350M

Item #	Description	Qty
GM1935MS-S	STRUT SPACER, FRONT, 3.5	2
GM1935UCA-L	UPPER CONTROL ARM, DR	1
GM1935UCA-R	UPPER CONTROL ARM, PA	1
H-BOX C19350M	HDWR BOX: C19350M	1

Part # C19350MPB

Item #	Description	Qty
GM1935MS-S	STRUT SPACER, FRONT, 3.5	2
GM1935UCA-L	UPPER CONTROL ARM, DR	1
GM1935UCA-R	UPPER CONTROL ARM, PA	1
H-BOX C19350M	HDWR BOX: C19350M	1
B8517 (REAR)	BLACK MAX SHOCK W/BLK BOOT	2

Part # C19350MPH

Item #	Description	Qty
GM1935MS-S	STRUT SPACER, FRONT, 3.5	2
GM1935UCA-L	UPPER CONTROL ARM, DR	1
GM1935UCA-R	UPPER CONTROL ARM, PA	1
H-BOX C19350M	HDWR BOX: C19350M	1
H7017 (REAR)	HYDRO SHOCK W/RED BOOT	2

Part # C19350MPM

Item #	Description	Qty
GM1935MS-S	STRUT SPACER, FRONT, 3.5	2
GM1935UCA-L	UPPER CONTROL ARM, DR	1
GM1935UCA-R	UPPER CONTROL ARM, PA	1
H-BOX C19350M	HDWR BOX: C19350M	1
M9517 (REAR)	M95 MONOTUBE SHOCK	2

Part # C19350MPN

Item #	Description	Qty
GM1935MS-S	STRUT SPACER, FRONT, 3.5	2
GM1935UCA-L	UPPER CONTROL ARM, DR	1
GM1935UCA-R	UPPER CONTROL ARM, PA	1
H-BOX C19350M	HDWR BOX: C19350M	1
N8017 (REAR)	NITRO SHOCK W/RED BOOT	2

Part # C19350MKX

Item #	Description	Qty
C19350M	COMPONENT BOX: C19350M	1
A2017	ADX 2.0 REMOTE RES SHOCK	2

Hardware Box Breakdown:

Part # H-BOX C19350M

Item #	Description	Qty
RBF20	REAR BLOCK, 2 FLAT	2
916X314X1112U	9/16 X 3-1/4 X 11-1/2 U-BOLT	4
HB-916	HDWR BAG: 9/16 N/I LOCK NUT	1
HB-C19350	HDWR BAG: C19350	1
I-C19350	INST SHEET: C19350	1

Hardware Bag Breakdown:

Part # HB-916

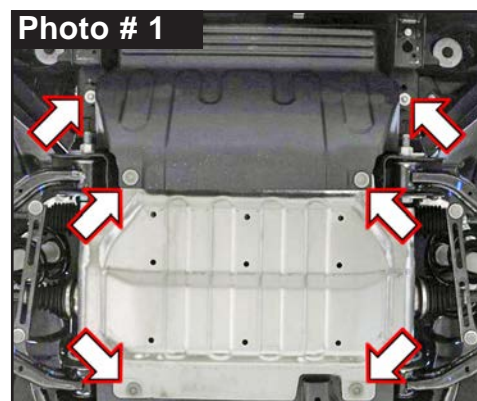
Item #	Description	Qty
916FTN	9/16 FINE THREAD N/I LOCK NUT	8

Part # HB-C19350

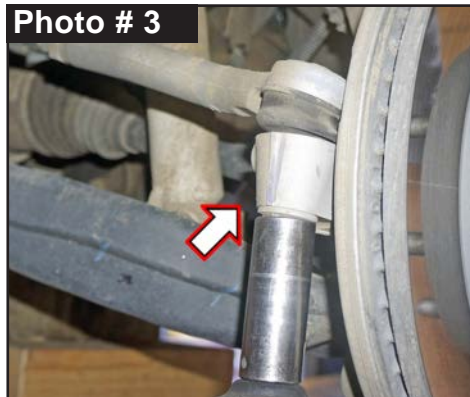
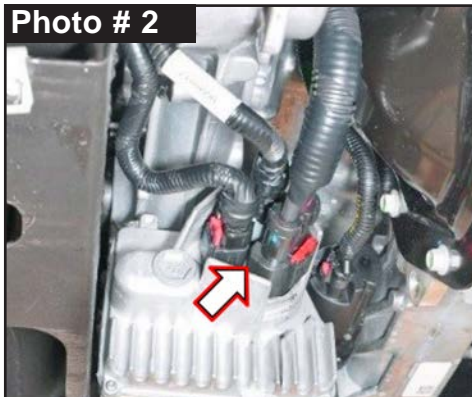
Item #	Description	Qty
10MMX1.5NFN	10MM X 1.5 N/I FLANGE NUT	6
10MMPN	10MM X 1.5 PUSH NUT	1
14CTN	1/4 COARSE THRD N/I LOCK NUT	2
14SAEW	1/4 SAE WASHER	2

Front Installation: Note: Save all factory components & hardware for reuse, unless noted.

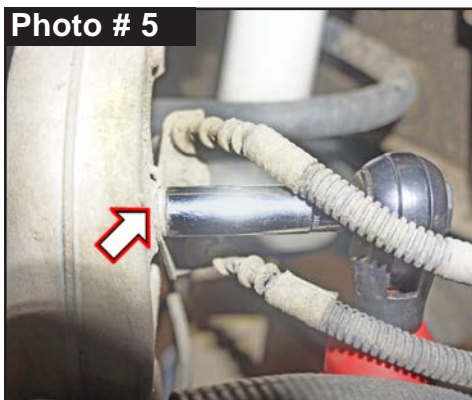
1. With vehicle on flat level ground, set emergency brake & chock rear tires \ wheels.
2. Raise front of vehicle, support frame rails using jack stands at indicated lift points in OEM service manual.
3. Remove the front tires \ wheels using a 22mm socket.
4. Remove two (2) OEM front skid plates located in front & under the front differential by removing the six (6) OEM bolts using a 13mm socket. (See Photo # 1)



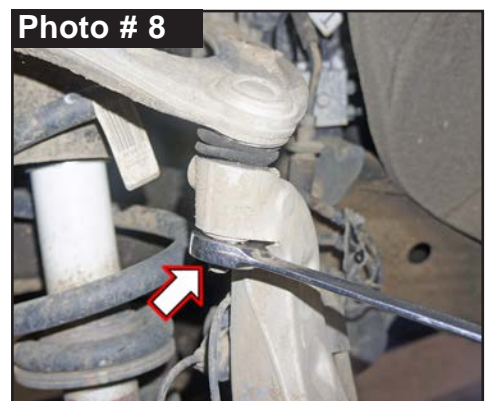
5. Disconnect three (3) EPAS plugs on steering assembly next to front differential. (See Photo # 2) **Tech Note:** Red safety lock clip must be slid rearward to unlock. Press & hold rearward tang down, grab connector & pull away while from plug-in.
6. Disconnect OEM outer tie rod end from OEM steering knuckle using a 21mm socket \ wrench. (See Photo # 2) **Note:** It may be necessary to strike the OEM steering knuckles to dislodge the OEM tie rod end. Be careful not to damage the OEM tie rod end.
7. Disconnect OEM ABS line bracket from OEM Upper Control Arm (UCA) using a 10mm socket \ wrench. (See Photo # 4)



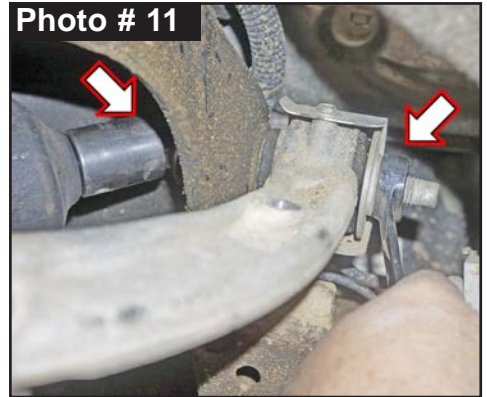
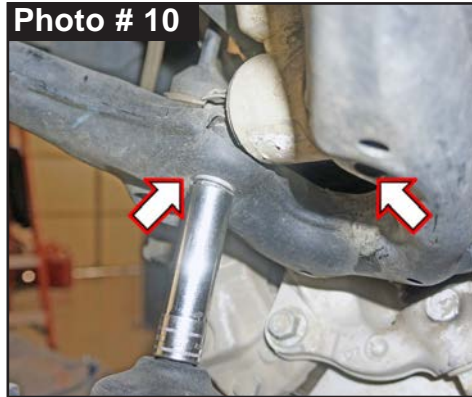
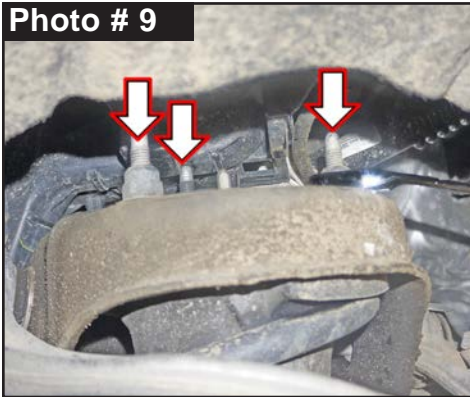
8. Disconnect OEM ABS line bracket from rear side of OEM steering knuckle using a 10mm socket \ wrench. (See Photo # 5)
9. Disconnect the OEM brake line bracket from OEM steering knuckle using a 10mm socket \ wrench. (See Photo # 6)
10. Disconnect the OEM sway bar end link from OEM lower control arm using a 18mm socket \ wrench. (See Photo # 7)



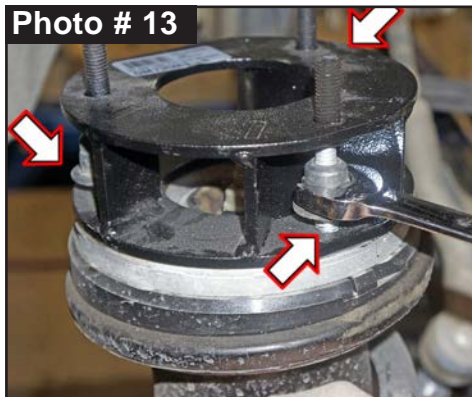
11. Support the bottom of OEM steering knuckle with jack. Loosen, but do not remove upper OEM ball joint nut from OEM knuckle using a 18mm socket \ wrench. (See Photo # 8) To unseat upper OEM ball joint taper, strike ball joint boss of knuckle using ball peen hammer to dislodge. **Note:** ONLY strike knuckle portion only. Remove nut & remove ball joint from knuckle. **Tech Note:** You may need to pry upper control arm down to disconnect ball joint.



12. Disconnect wiring harness clips from driver side OEM upper strut mounting nuts.
Disconnect three (3) OEM upper strut mounting nuts from frame mount using a 18mm socket \ wrench. (See Photo # 9) **Note:** Do Not remove center strut rod nut.
13. Disconnect two (2) OEM lower strut mounting nuts from lower control arm mount using a 15mm socket \ wrench. (See Photo # 10) Remove OEM strut assembly.
14. Mark the location of OEM Upper Control Arm (UCA) alignment cams.
Remove OEM UCA using a 21mm socket \ wrench. (See Photo # 11)



15. **Note:** Skyjacker UCA are Side Specific: Part number is on silver bar code label:
GM1935UCA-L Driver & # GM1935UCA-R Passenger.
Install Skyjacker UCA to appropriate side of vehicle. Align the location of the OEM alignment cams with OEM hardware using a 21mm socket \ wrench. (See Photo # 12)
Secure, but **Do Not Completely Tighten** control arm hardware at this time. To set bushings properly for ride height, these will be tightened once vehicle is on ground with full vehicle weight on tires \ wheels.
16. Install Skyjacker # GM1935MS-S Strut Spacer on top of OEM strut assembly with OEM hardware using a 18mm wrench. (See Photo # 13)
17. Install Skyjacker \ OEM strut assembly into upper strut mount at frame with supplied 10mm Nylon Insert Flange Nuts using a 15mm socket \ wrench. (See Photos # 14) **Tech Note:** Start all three (3) OEM flange nuts before beginning tightening sequence. Torque 25 ft-lbs.
Attach Skyjacker \ OEM strut assembly to lower control arm mount with OEM hardware using a 15mm socket \ wrench. (See Photos # 10) Secure, but **Do Not Completely Tighten**.



18. Connect OEM wiring harness clip to driver side OEM upper strut stud with supplied 10mm Push Nut.

19. While supporting the OEM steering knuckle, connect the new Skyjacker UCA to the OEM steering knuckle & fully tighten all upper A-arm & ball joint hardware with supplied cotter pins, nuts, OEM hardware, using a 18mm & 21mm socket \ wrench. (See Photo # 15)



20. Grease Skyjacker UCA ball joint using a grease gun. **CAUTION:** Skyjacker UCA Ball Joint is not fully greased from factory. GREASE Must Be Added to Skyjacker UCA Ball Joint using a grease gun. (See Photo # 16)

21. Connect OEM ABS line bracket to Skyjacker UCA with supplied 1/4" SAE Washer with 1/4" Nylon Insert Lock Nut using a 7/16" socket \ wrench. (See Photo # 17)



22. Connect OEM brake line bracket to OEM steering knuckle with OEM hardware using a 10mm socket \ wrench. (See Photo # 7)

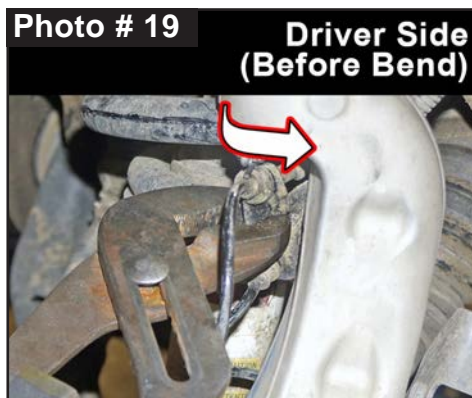
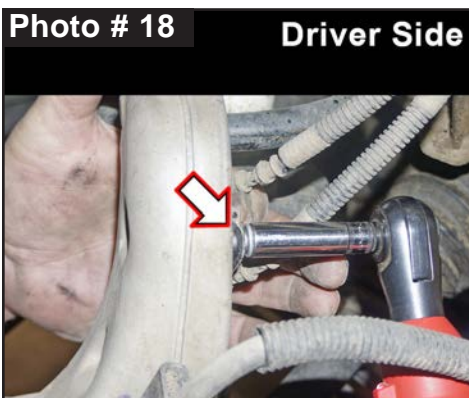
23. Connect OEM sway bar end link to OEM lower control arm with OEM hardware using a 18mm socket. (See Photo # 6) Secure, but **Do Not Completely Tighten.**

24. Connect OEM ABS line bracket to OEM steering knuckle with OEM hardware using a 10mm socket \ wrench. (See Photo # 18)

Tech Note: The OEM ABS line bracket must be bent for additional clearance.

Using adjustable pliers, bend driver side OEM ABS line bracket away from the OEM coil spring (outward toward the tire \ wheel: closer to the knuckle). (See Photo # 19)

Correct bend as shown. (See Photo # 20)



25. Connect OEM outer tie rod end to OEM steering knuckle with OEM hardware using a 21mm socket \ wrench. (See Photo # 3)

26. Connect three (3) EPAS plugs on steering assembly. (See Photo # 2) **Tech Note:** Press & hold rearward black tang down, grab connector & push plug-in. Push red slide into lock position. **Note:** Pull out on connector to verify that it is securely plugged in properly.

27. Install the two (2) OEM front skid plates located in front & under the front differential with the six (6) OEM bolts using a 13mm socket. (See Photo # 1)
28. Install the front tires \ wheels using a 22mm socket & lower the front of the vehicle to the ground.

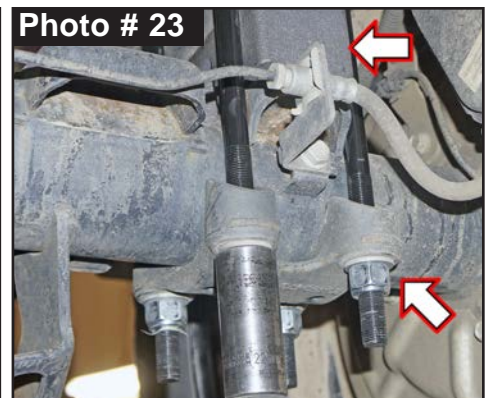
Rear Installation: Note: Save all factory components & hardware for reuse, unless noted.

1. Chock front tires \ wheels. Raise rear of vehicle & support frame rails using jack stands at indicated lift points in OEM service manual.
2. Remove rear tires \ wheels using a 22mm socket.
3. Disconnect OEM ABS lines from the rear differential using a 13mm socket \ wrench.
4. Support rear axle with a hydraulic jack. Allow ample room to lower rear axle. Remove the OEM rear shocks using a 21mm socket \ wrench. (See Photo # 21)
5. Remove OEM u-bolts using a 21mm socket \ wrench. (See Photo # 22)
Discard u-bolts & hardware. Retain lower OEM u-bolt plate.
6. While checking for appropriate slack in ABS lines, brake lines, rear emergency brake cables, & etc. Lower axle away from leaf springs to allow clearance for block.

Clean spring pads of all debris. Position Skyjacker # RBF20 2" Flat Block on top of axle pad. (See Photo # 23)

Raise axle to mate leaf springs to lift blocks.

Note: Be sure that leaf spring center bolt head seats properly into block & that block pin seats properly into top of axle pad.



7. Install Skyjacker 9/16" U-Bolts over OEM top plate \ leaf springs down into OEM u-bolt plate. Install supplied 9/16" Nylon Insert Nuts using a 7/8" socket \ wrench. (See Photo # 23)
Torque u-bolts evenly using an 'X' crisscross tightening sequence. Torque 125 ft.-lbs.

**NOTE: Kit With HYDRO, NITRO, Black MAX, or M95 Monotube: Proceed to Step 8.
Kit With ADX 2.0 Remote Reservoir: Proceed to Step 9.**

8. Install Skyjacker rear shock. Connect upper shock mount with OEM hardware using a 21mm socket \ wrench. Connect lower shock mount with OEM hardware using a 21mm socket \ wrench. (See Photo # 24) Secure, but **Do Not Completely Tighten** at this time.



9. Locate Skyjacker ADX rear shock. Loosely assemble two (2) supplied reservoir clamps with two (2) supplied hex head bolts using a 5/32" Hex Key socket. Position clamp into place around shock body & reservoir cylinder. Secure, but **Do Not Completely Tighten** at this time.

Install Skyjacker ADX rear shock. Connect upper shock mount with OEM hardware using a 21mm socket \ wrench. Connect lower shock mount with OEM hardware using a 21mm socket \ wrench. Secure, but **Do Not Completely Tighten** at this time.

CAUTION: Make Sure ADX Shock Reservoir \ Reservoir Hose Does Not & Will Not Make Contact with Anything Throughout the Full Travel Cycle of the Suspension. (frame, frame brackets, springs, brake lines, exhaust, etc.) For proper clearance, it may be necessary to change the location or orientation of the reservoir on the shock body. Use a 5/32" Hex Key socket to loosen clamps to position reservoir cylinder as needed.

10. Connect OEM ABS lines to the rear differential with OEM hardware using a 13mm socket \ wrench.
11. Install the rear tires \ wheels using a 22mm socket & lower the rear of the vehicle to the ground.

Final Front Steps:

1. Start vehicle. Make sure there are no dash lights pertaining to suspension.
2. Jounce vehicle a couple of times. This will help suspension settle to new ride height. Cycle steering lock-to-lock & check all components for proper operation & clearances. Pay special attention to clearance between tires \ wheels, ADX Shocks & Reservoirs, control arms, brake hoses, ABS wiring, etc.
3. Realign marks on UCA cam positions. Tighten both Skyjacker UCAs using a 21mm socket \ wrench to set bushings properly for ride height. Torque 150 ft.-lbs.

Note: Final torque will be set by alignment technician.

4. **Front Tighten & Torque Sequence.**

Front strut upper mount to Skyjacker Spacer using a 18mm socket \ wrench. Torque 25 ft-lbs.

Skyjacker Spacer to upper mount using a 18mm socket \ wrench. Torque 25 ft-lbs.

Front strut lower mount using a 15mm socket \ wrench. Torque 50 ft-lbs.

Tie rod end to steering knuckle using a 21mm socket \ wrench. Torque 65 ft-lbs.

Sway bar end link to sway bar using a 15mm socket \ wrench. Torque 35 ft-lbs.

5. **Rear Tighten & Torque Sequence.**

Rear shock absorber upper mount using a 21mm socket \ wrench. Torque 65 ft-lbs.

Rear shock absorber lower mount using a 21mm socket \ wrench. Torque 65 ft-lbs.

ADX Reservoir clamp. Double check position & clearance. Tighten with 5/32" Hex Key socket.

Torque u-bolts evenly using an 'X' crisscross tightening sequence. Torque 125 ft.-lbs.

Final Notes:

- After installation is complete, double check that all nuts & bolts are tight. Refer to the following chart for proper torque specifications. (**Note:** Do not re-tighten nuts & bolts where thread lock compound was used.)
- With vehicle placed on ground, cycle steering lock to lock & inspect steering, suspension, brake lines, front & rear drivelines, fuel lines & wiring harnesses for proper operation, tightness & adequate clearance.
- Have headlights readjusted to proper settings.
- Have a qualified alignment center align vehicle to OEM specifications.
- After first 100 miles, check all hardware for proper torque & periodically thereafter.

TORQUE SPECIFICATIONS					
INCH SYSTEM			METRIC SYSTEM		
Bolt Size	Grade 5	Grade 8	Bolt Size	Class 8.8	Class 10.9
5/16	180 in-lbs	240 in-lbs	6MM	102 in-lbs	108 in-lbs
3/8	30 ft-lbs	35 ft-lbs	8MM	16 ft-lbs	23 ft-lbs
7/16	45 ft-lbs	60 ft-lbs	10MM	32 ft-lbs	45 ft-lbs
1/2	65 ft-lbs	90 ft-lbs	12MM	55 ft-lbs	75 ft-lbs
9/16	95 ft-lbs	130 ft-lbs	14MM	85 ft-lbs	120 ft-lbs
5/8	135 ft-lbs	175 ft-lbs	16MM	130 ft-lbs	165 ft-lbs
3/4	185 ft-lbs	280 ft-lbs	18MM	170 ft-lbs	240 ft-lbs

**The Above Specifications Are Not to Be Used
When the Bolt Is Being Installed With a Bushing.**

Seat Belts Save Lives, Please Wear Your Seat Belt.



**JESUS
FORGIVES
ROCKS
DON'T**

Jesus Christ Died For You.

John 3:16

For God so loved the world that He gave His only Son, so that everyone who believes in Him should not perish, but have everlasting life.
Romans 3:23

For all have sinned; all fall short of God's glorious standard.
Ephesians 2:8

God saved you by his special favor when you believed. And you can't take credit for this; it is a gift from God.
Psalms 18:2

The Lord is my Rock, my fortress, and my savior; my God is my Rock, in whom I find protection. He is my shield, the strength of my salvation, and my stronghold.
Romans 10:9-10

That if you shall confess with thy mouth the Lord Jesus, and shall believe in your heart that God hath raised him from the dead, you shall be saved. For with the heart man believeth unto righteousness; and with the mouth confession is made unto salvation.

Pray This Simple Prayer:

God, I come to You admitting I have sinned against You and I need you to take control of my life. The Bible says anyone who calls on the name of the Lord will be saved. I am calling on You, Jesus. I ask that You come live in my heart and be the Lord over my life today. I do believe You died on the cross for me and came back to life to give me life! Thank You, Lord Jesus for a new life in You!

Now, go and tell somebody about your new life in Jesus, get a Bible, begin to read it, and go to a Bible believing church.

If you would like someone to pray with you, call Kenneth Copeland Ministries anytime at 800-600-7395.

To listen to commercial free Christian radio on the web, go to www.887fm.org

Jesús murió por ti.

Juan 3:16

“Porque tanto amó Dios al mundo, que dio a su Hijo unigénito, para que todo el que cree en él no se pierda, sino que tenga vida eterna.”
Romanos 3:23

“Pues todos han pecado y están privados de la gloria de Dios.”
Efesios 2:8

“Porque por gracia ustedes han sido salvados mediante la fe; esto no procede de ustedes, sino que es el regalo de Dios.”
Salmos 18:2

“El Señor es mi roca, mi amparo, mi libertador; es mi Dios, el peñasco en que me refugio. Es mi escudo, el poder que me salva, ¡mi más alto escondite!”
Romanos 10:9-10

“9 Que si confi esas con tu boca que Jesús es el Señor, y crees en tu corazón que Dios lo levantó de entre los muertos, serás salvo. 10 Porque con el corazón se cree para ser justifi cado, pero con la boca se confi esa para ser salvo.”

Ahora dí esta simple oración:

Dios, vengo a Ti y admito que he pecado contra Ti, necesito que tomes el control de mi vida. La Biblia dice que todo aquel que invoca el nombre del Señor escapará con vida. En este momento yo clamo ante Ti, Jesús; te pido que vengas a vivir en mi corazón y que tomes el control de mi vida. ¡Yo creo que tu moriste en la cruz y resucitaste para darme vida! ¡Gracias Señor Jesús, por una nueva vida que tengo en Ti! Amen.

Ahora ve y dile a alguien sobre la nueva vida que tienes en Cristo. Compra una Biblia y empieza a leerla. Busca una Iglesia que cree en la Biblia y hazte parte de esa Iglesia.

Si te gustaría orar con alguien, puedes llamar a este número 800-600-7395

Puedes ir a este sitio de Internet para escuchar música Cristiana sin anuncios, www.887fm.org

Check out our favorite ministries at:



www.innministries.org
www.familychurch.org
www.kcm.org