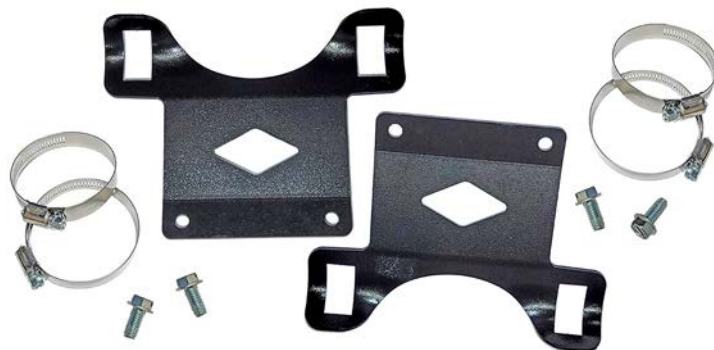


Universal Remote Reservoir Mount Installation Instructions

Required Tools List:

- SAE Sockets \ Wrenches (5/16" & 1/2")
- Power Drill
- Drill Bit (9/32")
- Standard Screwdriver
- Safety Glasses
- Torque Wrench
- Ball Peen Hammer
- Center Punch
- Paint Marker
- Measuring Tape



Before beginning installation, read these instructions completely. Please refer to Parts List to insure that all parts & hardware are received prior to disassembly of vehicle. If any parts are found to be missing, contact SKYJACKER[®] Customer Service at 318-388-0816 to obtain needed items. If you have any questions or reservations about installing this product, contact SKYJACKER[®] Technical Assistance at 318-388-0816.

Important Notes:

- This is a Universal Mount for a Remote Reservoir canister. It can be mount on any flat metal surface with remote canister up, down or at an angle. Choosing the proper angle is at your discretion, but one key to mounting properly is that the reservoir hose makes a smooth loop and is not crimped, nor rubbing or chaffing any surface.

CAUTION: Make Sure ADX Shock Reservoir Hose Does Not & Will Not Make Contact with Anything Throughout the Full Travel Cycle of the Suspension. (Frame, sway bar, springs, brake lines, exhaust, etc.)

Hardware Box Breakdown:

Part # UN1RR

Item #	Description	Qty
UN1RR-S	UNIV REMOTE RESERVOIR BRKT	2
HB-UN1RR	HDWR BAG: UN1RR	1

Hardware Bag Breakdown:

Part # HB-UN1RR

Item #	Description	Qty
HC40	HOSE CLAMP #40	4
516X34TCFB	5/16X3/4 THRD CUTTER FLG BOLT	4

Note: The following sample installation is for a 2019-2022 Ford F150 4WD rear mount application.

It will guide you through key steps of the installation process.



Installation:

1. Install Skyjacker ADX 2.0 shock into OEM mounting position.

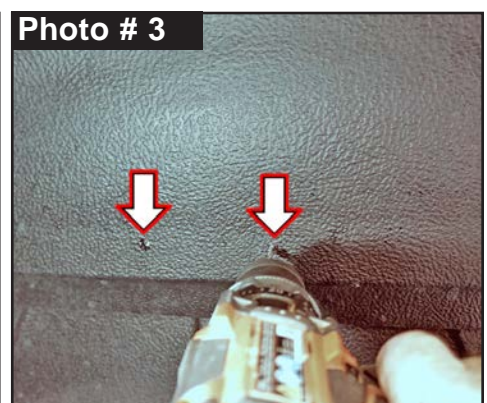
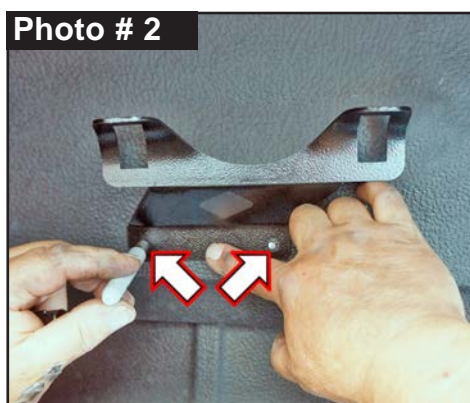
Place Skyjacker remote reservoir into cradle of reservoir bracket. Hold bracket and reservoir together to find your desired position. **Note:** The two (2) mounting holes on Skyjacker bracket have a 3-3/4" Eye Center-to-Eye center measurement. (1-7/8" from center of bracket.) (See Photo # 1)

2. Position bracket. Mark two (2) holes to be drilled. Mark with a center punch. (See Photo # 2)
3. **Note:** Prior to drilling, check behind surface area being worked on for any wires, brake lines, fuel lines, hoses, etc that could be damaged.

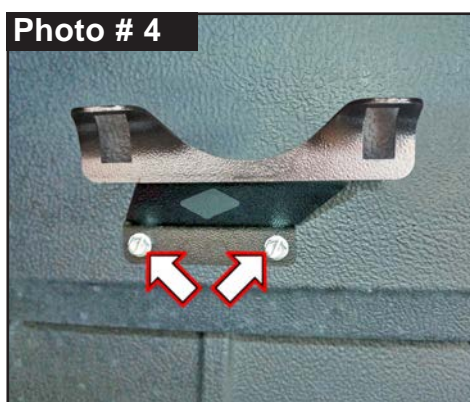
Using your punched marks as a guide, drill out marks using a 9/32" drill bit. (See Photo # 3)

Tech Note: You may want to first drill out holes with a smaller drill bit to be more precise.

File smooth any burrs or sharp edges on surface area, then paint or undercoat all exposed metal surface areas.



4. Attach bracket with supplied 5/16" x 3/4" Thread Cutter Flange Bolts using a 1/2" socket \ wrench. (See Photo # 4) Torque 180 in-lbs.



5. Place Skyjacker remote reservoir into cradle of reservoir bracket.

Attach reservoir to bracket with supplied #40 Hose clamps. **Note:** Route clamps around over top of bracket and back through bracket cut-out then around reservoir.



Attach using a standard screwdriver or 5/16" socket \ wrench. (See Photo # 5) Torque 180 in-lbs.

Tech Note: You can position or roll hose clamp rearward to hide bolts from view.

Final Notes:

- After installation is complete, double check that all nuts & bolts are tight.
- With vehicle placed on ground, cycle steering lock-to-lock & check all components for proper operation & clearances. Pay special attention to clearance between tires \ wheels, ADX Shocks & Reservoirs, brake hoses, ABS wiring, etc.