




## **Auxiliary Transmission Filter Kit**

<b>Part #</b>	<b>Vehicle</b>	<b>Application</b>
<b>1064017</b>	<b>Dodge</b>	<b>1994-2007</b>

*The BD Transmission Filter Kit will provide added security for your performance transmission. Oil normally flowing from the torque converter through the cooler and back to the pan will be filtered thru the LFP5570/ transmission filter that is rated at 98% efficient at 25 micron for extra protection and allow for easy filter replacements.*

**READ ALL INSTRUCTIONS CAREFULLY BEFORE INSTALLATION**

## Kit Contents

<b>1604120</b> Filter Head	<b>1604125</b> Filter Head Mounting Bracket	<b>1604008</b> Oil Filter	<b>1604046</b> ½" NPT x #8 ORB 90° Fitting
			
Qty: 1	Qty: 1	Qty: 1	Qty: 2
<b>1604048M</b> #8 JIC x ¼" NPT Straight Fitting	<b>1604049</b> #8 JIC-F x ½" Barb – 45°	<b>1604038</b> #8 Versaflare Tube Ferrule	<b>1604039</b> #8 Versaflare Tube Nut
			
Qty: 1	Qty: 1	Qty: 1	Qty: 1
<b>1604041</b> #8 JIC Adapter Union	<b>1452821</b> Hose Clamp	<b>1604124</b> Filter Head Bolt	<b>1300130</b> Long Tie Wrap
			
Qty: 1	Qty: 4	Qty: 2	Qty: 2
<b>1100111</b> ¼" Flat Washer	<b>1100112</b> ¼" Lock Washer	<b>1604047</b> #8 JIC x ½" Hose	<b>1604054</b> 1/2" Transmission Hose
			
Qty: 2	Qty: 2	Qty: 3	Qty: 1 x 74"
<b>1500359</b> 3/8" Thread Cutting Bolt	<b>1200105</b> Flat Washer	<b>1120031</b> 3/8" Lock Washer	<b>1120033</b> 3/8" Nut
			
Qty: 2	Qty: 2	Qty: 2	Qty: 2

BD Engine Brake Inc.

Plant Address: 33541 MacLure Rd. Abbotsford, BC, Canada V2S 7W2

U.S. Shipping Address: 88-446 Harrison St, Sumas, WA 98295 U.S. Mailing Address: P.O. Box 231, Sumas, WA 98295

Phone: 604-853-6096 | Fax: 604-853-8749 | Internet: www.bd-power.com

## ***Tools Required***

- Set of combination wrenches
- Power drill with 1/8", 1/4" & 3/8" bits
- Hammer
- Center punch
- Drain pan
- Pipe cutter
- Thread sealant (liquid, paste or tape)

## ***Oil Filter Cross Reference***

<b>HASTINGS</b>	<b>BALDWIN</b>	<b>DONALDSON</b>	<b>FLEETGUARD</b>	<b>FRAM</b>	<b>LUBER-FINER</b>	<b>WIX</b>
LF364	BT230	P555570	LF3342	PH3519	LFP5570	51268

BD Engine Brake Inc.

Plant Address: 33541 MacLure Rd. Abbotsford, BC, Canada V2S 7W2

U.S. Shipping Address: 88-446 Harrison St, Sumas, WA 98295 U.S. Mailing Address: P.O. Box 231, Sumas, WA 98295

Phone: 604-853-6096 | Fax: 604-853-8749 | Internet: [www.bd-power.com](http://www.bd-power.com)

## ***Installation***

Raise the vehicle on a hoist or safety stands to gain access to the driver's side of the transmission area.



Locate and clean a spot to mount the filter housing along the left hand (driver side) frame rail.



Using the filter mounting bracket or a cut-out/trace as a guide, mark the 2 spots for the mounting bolts. The bracket will be positioned so that the filter will be pointing downward when installed (see picture to the left).

BD Engine Brake Inc.

Plant Address: 33541 MacLure Rd. Abbotsford, BC, Canada V2S 7W2

U.S. Shipping Address: 88-446 Harrison St, Sumas, WA 98295 U.S. Mailing Address: P.O. Box 231, Sumas, WA 98295

Phone: 604-853-6096 | Fax: 604-853-8749 | Internet: [www.bd-power.com](http://www.bd-power.com)



To allow for easier drilling, center-punch the two marked spots for the mounting bolts.



Using a 5/16" drill bit, drill pilot holes for thread cutting mounting bolts.



Install the two **90° ORB fittings** (1604046) into the filter head (do not use pipe sealant). When installed, the fittings need to point toward the front of the vehicle. For ease of installation, we recommend assembling the fittings on the filter head on a work bench before installing it onto the vehicle.

Twist the fitting in until the o-ring gets as close as possible to the filter head, then by holding the fitting, tighten the jam nut.

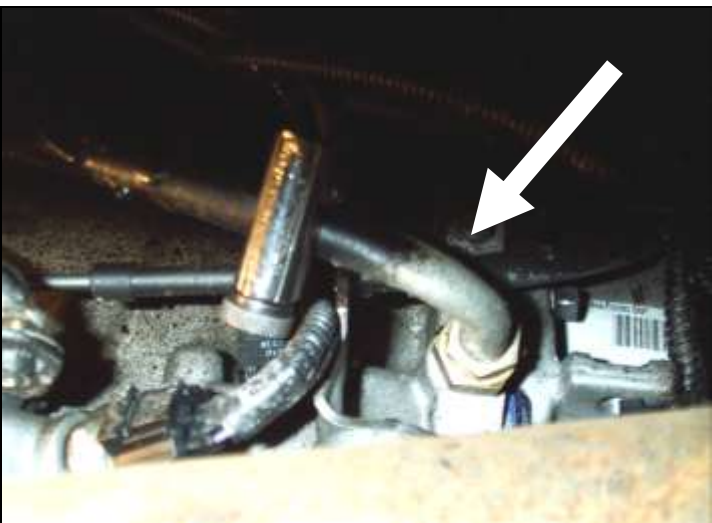


Install the two 1/2" hose x 1/2" NPT barbed fittings (1604047) into the 90° ORB fittings (1604046) using some pipe sealing compound or tape to the threads of the brass barb fittings only.

**USE PIPE SEALANT THAT IS COMPATIBLE WITH OIL / TRANS FLUID.**



Position the filter mounting bracket and install the 2 thread cutting mounting bolts using the flat washers supplied. Then, secure it using nuts and lock washers.



Locate the oil cooler line towards the rear of the transmission.

BD Engine Brake Inc.

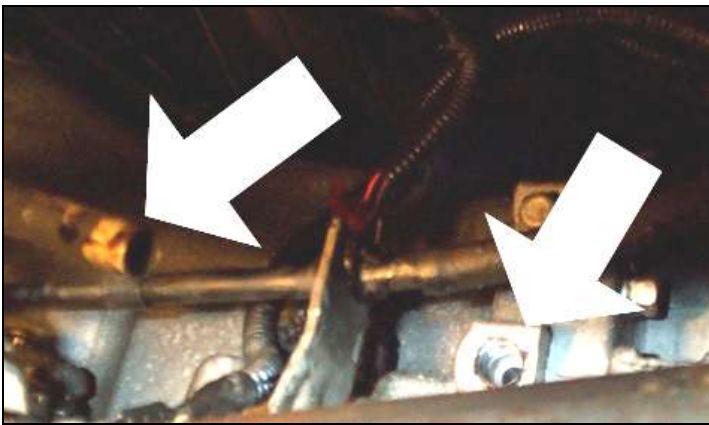
Plant Address: 33541 MacLure Rd. Abbotsford, BC, Canada V2S 7W2

U.S. Shipping Address: 88-446 Harrison St, Sumas, WA 98295 U.S. Mailing Address: P.O. Box 231, Sumas, WA 98295

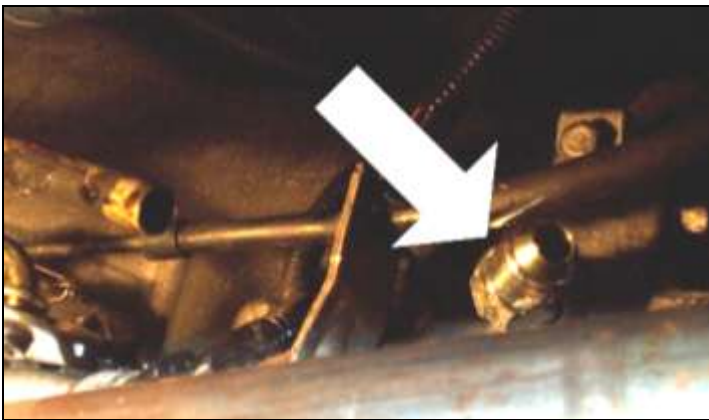
Phone: 604-853-6096 | Fax: 604-853-8749 | Internet: [www.bd-power.com](http://www.bd-power.com)



Using a small pipe cutter, cut the line approximately 6" from the bend.  
NOTE: You may want to use the drain pan to capture any spilled fluid.



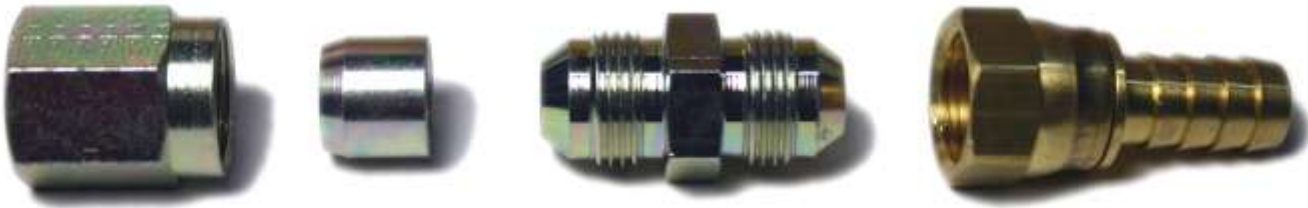
Clean the ends of the cut pipe and then remove the short portion and fitting from the transmission.



Install the straight 1/4NPT-JIC (1604048M) fitting into the open port on the transmission using pipe sealant on the threads. Thread the fitting in finger tight, and then turn once more with a wrench. Do not over torque as you will damage the case.

Once the NPT fitting is installed, thread the 45° JICF to 1/2 Hose barb fitting (1604049) in place. Align the hose inlet correctly and tighten with a wrench, use a second wrench to hold the NPT fitting. Thread sealant is not needed.

(Fitting in picture may not be correct)



Install the female barb fitting onto the male JIC coupler. Insert the compression nut, compression ferrule and the JIC fitting over the forward portion of the transmission line and tighten. **These are pressure fittings so do not over-tighten.**



Measure and cut a section of the blue transmission filter hose supplied and install onto the barb fitting at the "IN" port of the filter head and secure it tightly with hose clamps. Install the other end of the hose onto the barb fitting attached to the return line from the cooler and secure tightly with hose clamps.

Measure and cut the remaining blue transmission hose and install onto the barb fitting at the "OUT" port of the filter head and secure tightly with a hose clamp. Install the other end of the hose onto the barb fitting installed on the transmission port and secure it tightly with a hose clamp.

When routing hoses, make sure that they are not rubbing against anything that will cause them to wear. Secure the hoses using tie wraps, but leave enough slack for flex movement.

Add fresh transmission fluid into the oil filter (check with transmission specifications for proper fluid type or confirm with vehicle owner as which fluid he may be using) and lubricate the oil filter seal with some fresh transmission fluid. Screw the filter onto the threads of the filter head and once the rubber seal has contacted the mating surface of the filter head, tighten the oil filter an additional  $\frac{1}{4}$  to  $\frac{1}{2}$  turn.

**\*\* DO NOT USE A FILTER WRENCH TO TIGHTEN THE FILTER ELEMENT AND DO NOT OVER-TIGHTEN THE FILTER. \*\***

After installation is completed, take the vehicle on a short road test, check for any leaks and top up the fluid level.

BD Engine Brake Inc.

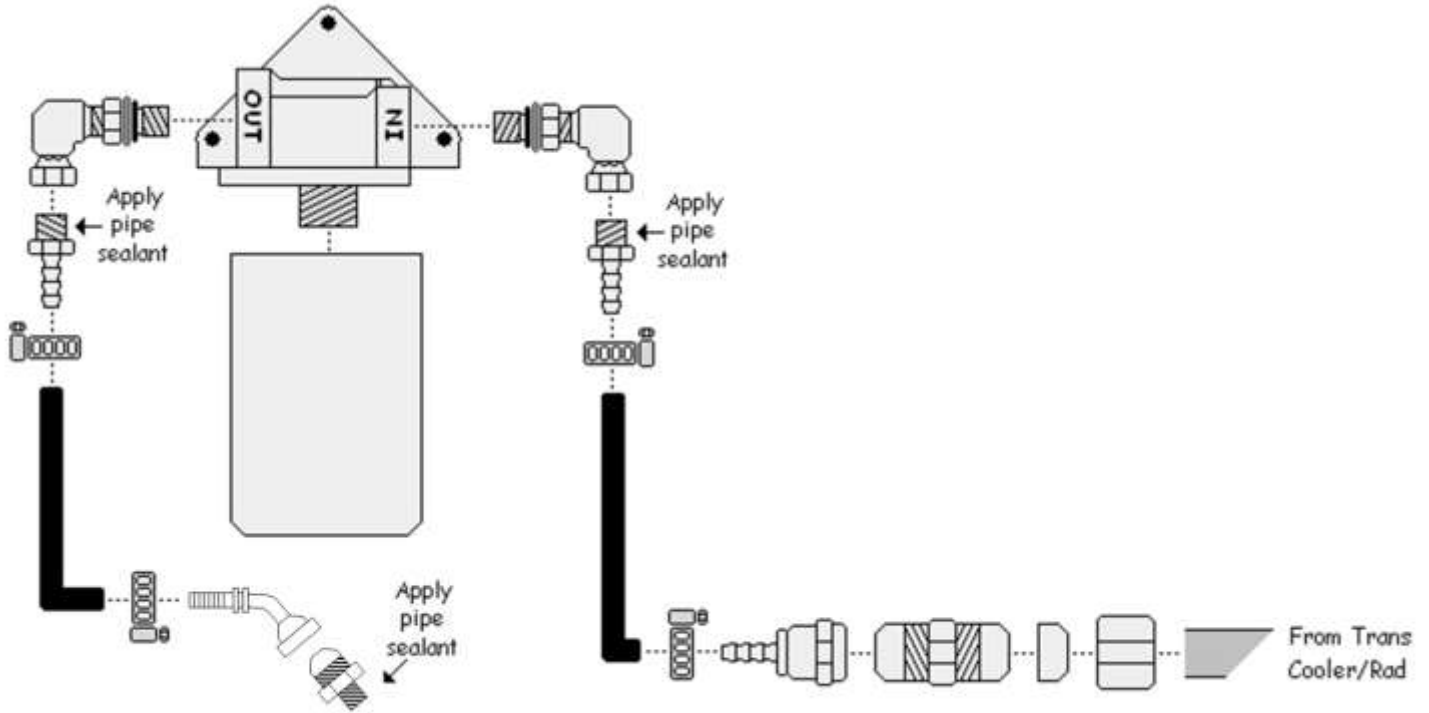
Plant Address: 33541 MacLure Rd. Abbotsford, BC, Canada V2S 7W2

U.S. Shipping Address: 88-446 Harrison St, Sumas, WA 98295 U.S. Mailing Address: P.O. Box 231, Sumas, WA 98295

Phone: 604-853-6096 | Fax: 604-853-8749 | Internet: [www.bd-power.com](http://www.bd-power.com)



# Filter Flow Layout



If you experience any problems or difficulties with the installation of this kit, please contact the BD Technical Department at (800) 887-5030 or fax at 1-604-853-8749, between 8:00am and 4:30pm Pacific Standard Time.