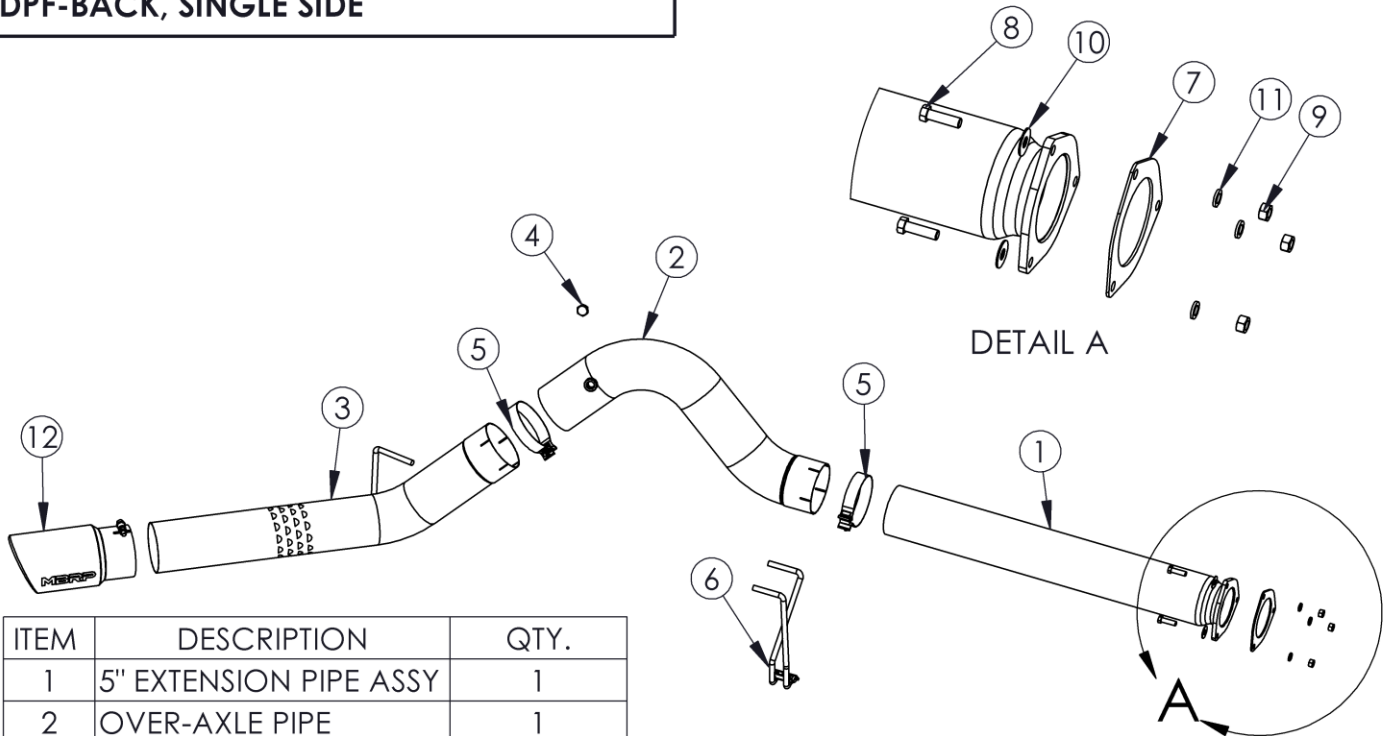


# S6253

2011-2016 FORD F250/F350/F450,  
CREW CAB & SUPERCAB,  
6.7L POWERSTROKE,  
5" DPF-BACK, SINGLE SIDE

# MBRP®



| ITEM | DESCRIPTION            | QTY. |
|------|------------------------|------|
| 1    | 5" EXTENSION PIPE ASSY | 1    |
| 2    | OVER-AXLE PIPE         | 1    |
| 3    | TAIL PIPE              | 1    |
| 4    | HEX HEAD BUNG PLUG     | 1    |
| 5    | 5" BAND CLAMP          | 2    |
| 6    | HANG TIGHT™ HANGER     | 1    |
| 7    | FLANGE GASKET          | 1    |
| 8    | 7/16" X 1 1/2" BOLT    | 3    |
| 9    | 7/16" NUT              | 3    |
| 10   | 7/16" FLAT WASHER      | 3    |
| 11   | 7/16" LOCK WASHER      | 3    |
| 12   | EXHUAST TIP            | 1    |

## PLEASE READ BEFORE STARTING INSTALLATION

**While MBRP has made every effort to ensure that all components of this system are of superior quality and properly packaged, it is the installer's responsibility to ensure the following before removal of the factory exhaust:**

- that ALL components shown above are present.
- that ALL mating components fit together.
- that there are no damaged components.
- that the system you have purchased is appropriate for your vehicle year, model and configuration.
- that the system will not interfere with any modifications previously installed or planned.
- that you have read and understand these instructions.

If you have any questions or are uncertain about any aspect of the installation of this system to your vehicle please contact your dealer before commencing installation.

# MBRP

## Removal of Stock System

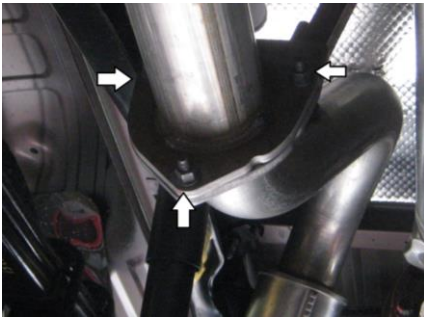


Figure 1

1. Apply some penetrating lubricant to all exhaust fasteners, hangers, and rubber insulators.
2. Loosen the three (3) nuts securing the extension pipe flange to the over-axle pipe. **Refer to Figure 1.**

**Refer to Figure 1.**

3. Remove the temperature sensor from the over-axle/tail pipe. Remove the factory over-axle/tail pipe.

4. Loosen the three (3) nuts securing the extension pipe to the flange directly behind the exhaust filter and remove the extension pipe.

**Refer to Figure 2.**

## Installation of MBRP Performance Exhaust

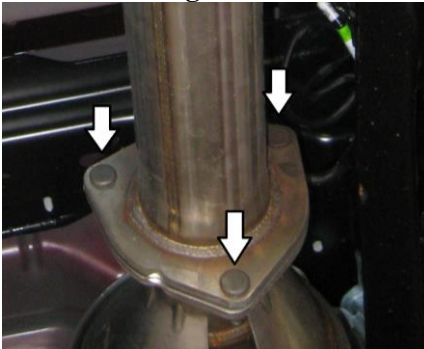


Figure 2

1. The **Extension Pipe** is pre-cut for the 172.4" (crew-cab long-box) wheelbase. Cut the **Extension Pipe** to the appropriate length for the installation vehicle. **Refer to Figure 3.**

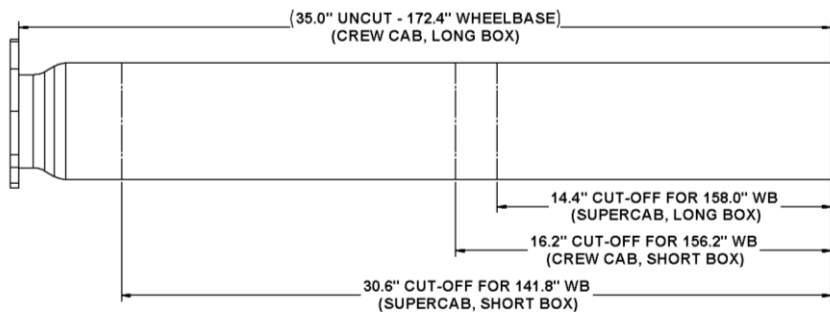


Figure 3

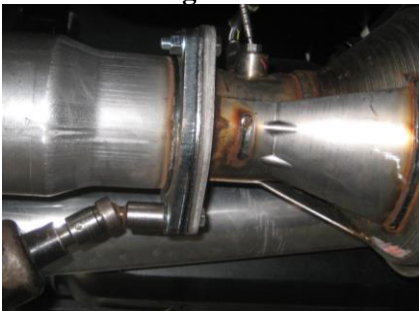


Figure 4

2. Mate the **Extension Pipe** flange to the stock exhaust flange with the **Gasket** between them and fasten the flanges together with the hardware provided. **Refer to Figure 4.**

3. Slide a **5" Band Clamp** onto the **Over-Axle Pipe**. Install the **Hang Tight™ Hanger** onto the **5" Band Clamp** as shown in the **Figure 5**, below. Loosely install the assembly to the **Extension Pipe** and place the **Hang Tight™ Hanger** into the existing rubber insulator. (Hanger bracket may not be as shown).

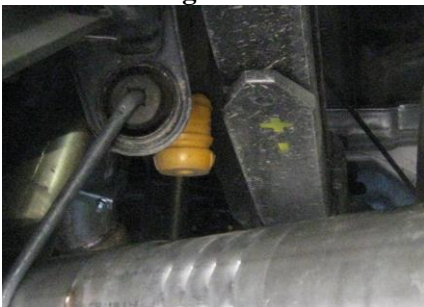
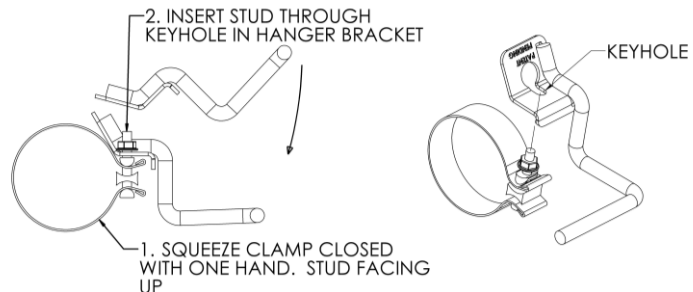


Figure 5



3. ROTATE HANGER BRACKET TO SEAT THREADED STUD IN SLOT. BE SURE THE NUT IS ABOVE THE BRACKET

Figure 6

4. Use the **5" Clamp** to install the **Tail Pipe** inserting the hanger into the rearward factory rubber isolator. **Refer to Figure 6.**

5. Install the temperature sensor of Hex Head Bung Plug (11-14 models) into the bung on the **Over Axle Pipe**. **Refer to Figure 7.**

6. Install and adjust the **Exhaust Tip** to suit. Tighten the lock bolt located on the **Exhaust Tip**.

7. Ensure that there is adequate clearance around the spare tire, lines, wires, body panels and suspension. Tighten all connections.



Figure 7

**Congratulations!** You are ready to begin experiencing the improved power, sound, and driving experience of your **MBRP** performance exhaust system. We know you will enjoy your purchase.