



INSTALLATION INSTRUCTIONS

2020+ FORD SUPER DUTY DUAL FOG MOUNT KIT



PRODUCTS INCLUDE:

- (1) Driver Side Bracket
- (1) Passenger Side Bracket
- *Lights sold separately.

RECOMMENDED TOOLS:

- 8mm socket
- 13mm socket
- 15mm socket
- T25 Torx

IMPORTANT

THANK YOU FOR PURCHASING RIGID INDUSTRIES' PRODUCTS FOR YOUR VEHICLE.

Please read through all of these Instructions and tips before proceeding with the installation.

We do our best to provide a simple installation process for all applications however a professional installation is always recommended.

Always disconnect any power sources connected to your vehicle before servicing fuses or electrical systems.

STEP: 1

Disconnect the negative battery terminal before starting the install.

Remove 4 circled bolts with a 15mm socket to remove the protective plate. (Driver side shown)



STEP: 2

Remove the lower bolt and loosen the upper bolt with a 13mm socket. Unplug the fog light connector.



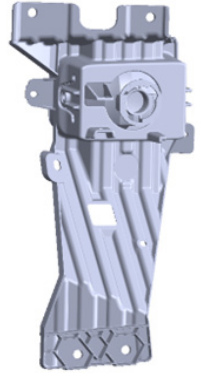
STEP: 3

For the LED Fog lamps (Platinum and Limited Models), remove the 4 circled screws with a T25 Torx on the back of the OEM fog light to separate the OEM fog light bracket and the fog light.

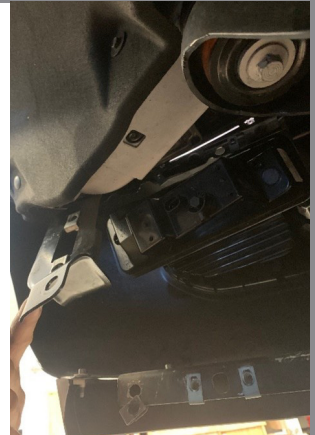
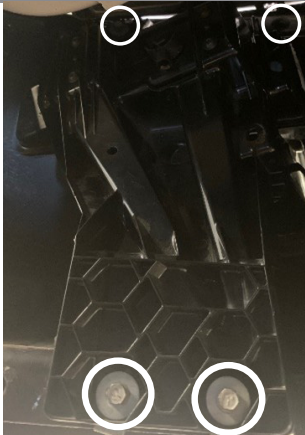


STEP: 3 CONTINUED

Pictured on the right, is the standard fog light on the Lariat and King Ranch models. This does not require removing the 4 Torx screws.

**STEP: 4**

Remove the 4 circled bolts with an 8mm socket. Then remove the fog light bracket and the light afterwards.

**STEP: 5**

Remove the fog light bezel from the bumper. Pinch the clips on the inside the bezel to unsnap it from the bumper.



STEP: 6

After removing the bezel, install the pods onto the bracket as shown below.



Reinstall the two upper bolts loosely with an 8mm socket.



STEP: 7

Next, install the front bezel with the supplied M5x0.8 button head bolts, nyloc's and washers.

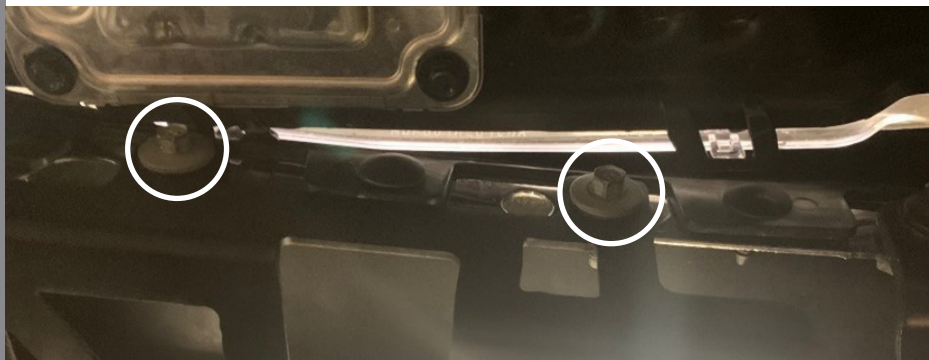


Use a 3mm hex key to for the button head and an 8mm socket to tighten the nyloc's.



STEP: 7 CONTINUED

Now tighten down the two upper bolts with an 8mm socket.

**STEP: 8**

You've finished installing one side, repeat steps 1-7 on the opposite side.



Wiring: Wire your lights according to the instructions included with the light. Take care to avoid any heat sources and sharp or abrasive surfaces.

Your installation is now complete.
Welcome to the Rigid Nation!

WARRANTY INFORMATION

For warranty information, visit www.rigidindustries.com/about/warranty 779 N Colorado St, Gilbert, AZ 85233 · 855-760-5337
www.rigidindustries.com

RIGID, D-Series and Rigid Industries are registered and/or common law marks owned by JST Performance, LLC, a Delaware limited liability company d/b/a Rigid Industries.

11-14116-A