

# INSTALLATION MANUAL

## STK-5500B0

ACCESSORY:  
**Sump Kit**



**FASS**<sup>®</sup>  
Diesel Fuel Systems

ENGINEERED EXCELLENCE

Dear Valued Customer,

**“Made in the USA”** is not just a slogan at FASS; it’s what we live by! FASS is not only assembled in the USA but 98%+ of the FASS product is manufactured in the USA, helping to employ Americans and strengthen America. At FASS, we scrutinize our suppliers and demand the highest quality American-made components. However, this does come at a price, which is one of the main reasons FASS products are more expensive than the competition. Remember price does not dictate quality but quality does dictate price! Here at FASS, we believe it’s worth the commitment and will continue this practice to support America! Our competition is doing exactly the opposite by using foreign-made components.

Building extremely “High-Quality” fuel products is our business. We concentrate all of our efforts in this arena. No one else is as specialized as FASS in what we do! This is one of the ingredients to insure you are running with the “Highest-Quality” fuel system in the world! We have implemented very rigorous testing procedures to provide the “Highest Quality” we have become known for. Not only is our product superior, but customer satisfaction is #1 at FASS. It is our goal to provide the best service possible. Our confidence is evident in the products we make as each product is backed by an industry leading warranty!

Our R & D department, in conjunction with our Dealer Support department, is continually searching for ways to improve quality, expand our product line, and provide superb support to our network of dealers so our customers’ needs and expectations will be exceeded.

To help insure you receive the proper system and customer support at the local level, FASS has a VIP and Authorized Dealer network representing FASS products. We recommend you go to [www.FASSride.com](http://www.FASSride.com), click “Find A Dealer”, put in their ZIP code, select the type of dealer, and see if the company you purchased from is listed. If they are not, put their phone number in the field below the ZIP code field to see if they are listed. Below these two fields is a list of “Terminated/Unauthorized” dealers. You may want to review this list. If the company is not listed or is on the “Terminated/Unauthorized” list, we suggest you return the product immediately to that dealer and call FASS. We’ll recommend you to the nearest dealer.

# INSTALLATION MANUAL

## Follow these steps to ensure a simple installation of your new FASS ACCESSORY

1. *Read the installation manual completely before attempting installation. The installation of this product indicates that the buyer has read and understands the limitations of the FASS manufacturers warranty agreement and accepts the responsibility of its terms and conditions.*
2. Inventory the package components. Notify the place of purchase immediately of any parts missing or damaged.
3. The installation recommendations contained herein are guidelines. Use good judgment and take into consideration your vehicles' accessories, i.e. empty fuel tank before beginning installation of this product.
4. For best results in accuracy and efficiency (due to training, communication, and our relationship with our dealer network), we recommend a ViP FASS dealer for the installation. They are prepared to install the FASS fuel pumps with the most efficiency. If a situation/problem arises during the installation, they are the most prepared for that situation/problem. DPPI is not responsible for any installation mistakes.
5. If you have any questions or concerns that can not be addressed with your dealer, email or call FASS.
6. If any installation procedure is uncertain, contact FASS technical support.

Email [techsupport@FASSride.com](mailto:techsupport@FASSride.com) or call customer service; 636-433-5410

# STK-5500B0 CONTENTS



SP-5500



SC-5500



OR-340Viton

OR-350Viton



PL-1001



PL-1004



SSSCP1420112 (4)  
1/4"-20x1 1/2"



SHCS14Z015Z (10)  
1/4"-20 x 1 1/2"



Nylon Washer  
11107655 (10)

# STEP 1: INSTALLING THE (STK-5500B) SUMP

- A. Locate the lowest point of the fuel tank, which is typically below the factory fuel module. On some applications there is a dimple you can use for a center point reference and it has the flattest surface for sealing the sump.



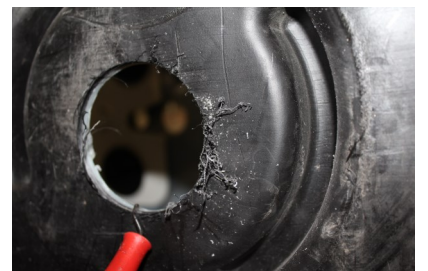
- B. Using the center point, drill a small hole to drain the remaining fuel. Recommend having a container large enough to retain the remain fuel. Allow fuel to drain completely.



- C. Drill out a 2 3/4" hole using the center point and a hole saw.



- D. De-burr hole and remove all shavings.



- E. Place SP-5500 (sump) into place, using 1 of the 10 mounting holes in the sump drill 1 hole smaller than the 1/4" bolts. This will allow temporary placement of 1 bolt.



# STEP 1: INSTALLING THE SUMP

- F. Using a 1/4 - 20 x 1 1/2" SHCS bolt the sump into place. Opposite the previously drilled hole drill an identical hole and insert bolt. This will hold the sump in place.



- G. Using the sump mounting holes as your guide, drill out the remaining 8 holes with a 1/4" drill bit. Then remove the sump and drill out the 2 smaller temporary holes (used for holding the sump) with the 1/4" drill bit.



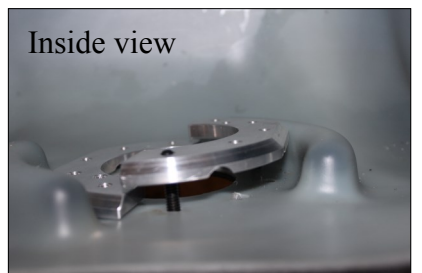
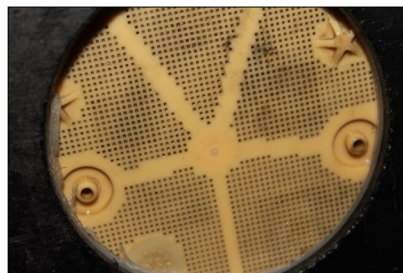
- H. De-burr holes and remove all shavings.



- I. As seen in photo, screw in allen bolts into SC-5500's (sump clamp). These are used for alignment and will be removed later.



- J. Push up on the sending unit, inside the fuel tank place the SC-5500's (sump clamp) into place with the arches facing the fuel tank surface. Note: the major portion of the location studs will be exiting the fuel tank.



- K. Place nylon washers onto the 1/4 - 20 x 1 1/2 SHCS's. Recommendation: apply a small amount of gasket sealant onto the threads to help prevent any leaks.



# STEP 1: INSTALLING THE SUMP

- L. Install the inner and outer O-rings to the sump.



- M. Using the 1/4 - 20 x 1 1/2 SHCS's, install sump over alignment studs, then remove the alignment studs and replace with the SHCS's. Note: Direct the fuel suction hole of the sump in the proper direction. Torque to 30 in lbs. Applying silicone to the SHCS's is also recommended.



- N. Using thread tape on the pipe threads install the PL-1001 (3/8" push lok) or the PL-1004 (1/2" push lok) fitting.

**NOTE: Hose clamps are not recommended for push lock fittings. They will hold up to 300psi! Use oil on fittings and inside fuel line when installing Push-Lok fittings**



- O. Attach the fuel suction line to the suction port of the sump. Remember there is no need for hose clamps for push lok fittings and fuel line!



- P. Secure all fuel lines (hug the fuel line as close as possible to the fuel tank) with cable ties. Cable ties are an economical way to prevent the possibility of problems occurring!

- Q. Put about 5 gallons of fuel in the tank and check for leaks. Reconnect the vehicles battery. Prime the fuel system according to owners manual.



**Note: Secure all fuel lines with cable ties. Cable ties are an economical way to prevent the possibility of problems occurring!**

# SUMP TEMPLATE

