

SPECTRE®

Performance

Intake Installation Instructions P/N 9059 (red filter) - P/N 9059B (blue filter) P/N 9059K (black filter)

Year/Make/Model/Engine

1994-97 Ford F250/350 SuperDuty 7.3L Turbo Diesel

NOT LEGAL FOR SALE OR USE ON ANY POLLUTION CONTROLLED MOTOR VEHICLE IN CALIFORNIA OR STATES ADOPTING CALIFORNIA EMISSION PROCEDURES.

See Spectreperformance.com for CARB status on each part for a specific vehicle



Parts List

- 1- Heat Shield
- 1- Air Intake tube
- 1- Air Filter
- 1- Edge Trim
- 3- 4" Hose clamps
- 1- 4" Flex Coupler
- 3- M6 bolts
- 7- M6 Flat Washers
- 4- M6 Nylock nuts
- 2- Grommets
- 1- Large Bracket
- 1- IAT Mount Bracket
- 1- L- Bracket

Tools Required:

- 5/16" or 8mm Nut driver
- 1/4" Drive Ratchet
- 8mm socket
- 10mm socket
- 8 inch extension
- Phillips screwdriver
- Flat Blade screwdriver

For filter reorders ask at the special order counter of your local parts store or call:
1-909-673-9800

ask for: P/N HPR0882 (red filter)
P/N HPR0882B (blue filter)
P/N HPR0882K (black filter)



Step 1

Safety first! Before you begin the installation, make sure that the vehicle is in park (or neutral for a manual transmission) with the parking brake set. Disconnect the negative battery terminal and verify that all components that are listed are present. **Note:** This kit was designed and tested on a stock engine without any custom tuning done to the engine computer. Removing the battery cable may erase the programmed radio stations. The anti-theft code will need to be entered into some radios after the battery cable is connected. The anti-theft code can typically be found in the owner's manual or at your local dealership.



Step 2

Loosen and remove the bolt on the radiator core support, then remove the air inlet duct as shown.



Step 3

Loosen the screws that secure the air cleaner top as shown.



Step 4

Loosen the hose clamp at the turbo inlet tube then remove the upper air cleaner assembly as shown. Remove the air filter.



Step 5

Loosen the nut that secures the lower air cleaner assembly as shown.



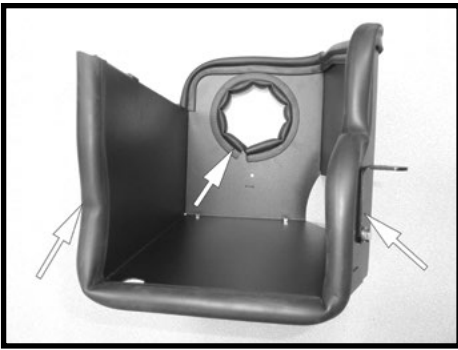
Step 6

Disconnect the air temperature sensor electrical connector. Pull firmly upwards to release the lower air cleaner assembly from the retaining grommets then remove as shown.

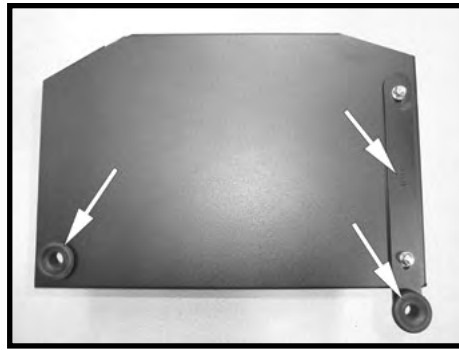


Step 7

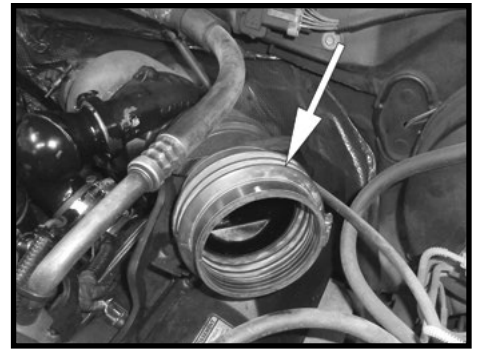
Remove the air temperature sensor by turning it a 1/4 turn, then pull the sensor out of the lower air cleaner assembly as shown.



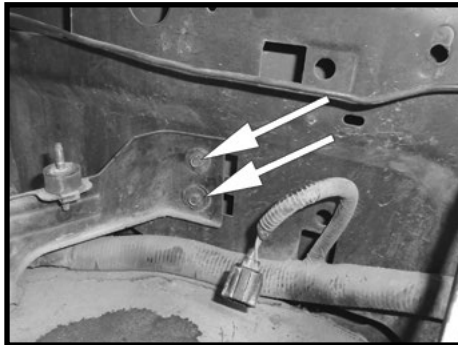
Step 8
Install the provided pieces of edge trim onto the heat shield as shown. Then using the provided hardware install the “L” bracket onto the heatshield as shown.



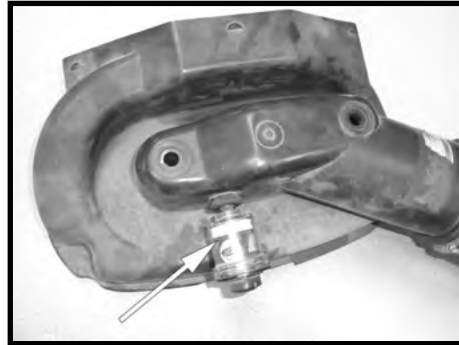
Step 9
Using the provided hardware, install the straight bracket onto the bottom of the heat shield as shown. Then install the stock rubber grommets from the lower air cleaner assembly as shown.



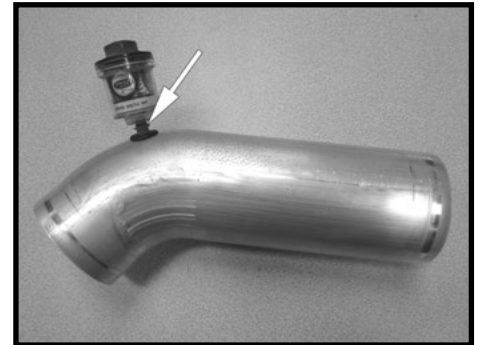
Step 10
Install the provided 4” flex coupler onto the turbo inlet tube using the provided hose clamps.



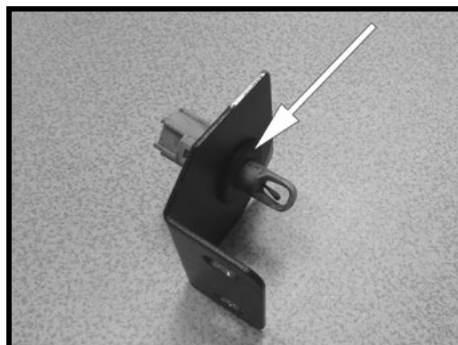
Step 11
Loosen and remove the two bolts that secure the fuse box bracket to the inner fender as shown.



Step 12
Remove the filter minder from the stock air box.



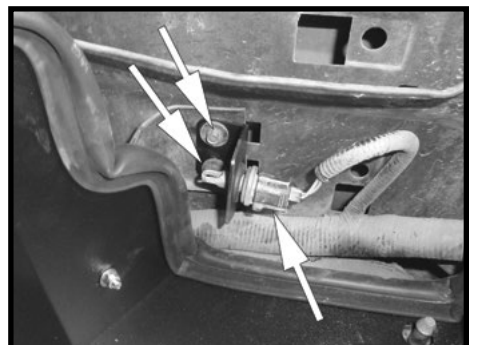
Step 13
Install the provided grommet into the Spectre intake tube then, install the filter minder into the grommet.



Step 14
Install the provided grommet into the air temperature bracket and then install the air temperature sensor into the grommet.



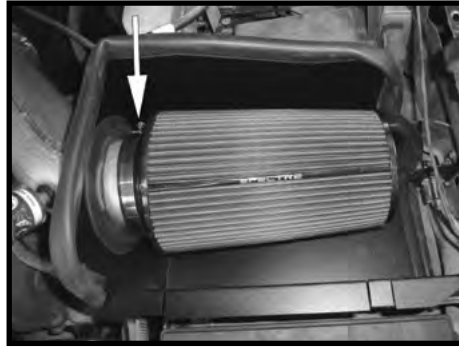
Step 15
Install the heat shield assembly and push the rubber grommets onto the stock locating pins, then secure the “L” bracket to the original air cleaner rubber mounting stud using the provided washer and nylock nut.



Step 16
Install the air temperature bracket onto the fuse box support bracket using the bolts removed in Step 11. Reconnect the air temperature sensor electrical connector as shown.



Step 17
Install the Spectre intake tube into the hole in the heat shield then, into the flex coupler at the turbo inlet tube. Secure with the provided hose clamps.



Step 18
Install the Spectre air filter and secure with provided hose clamp.



Step 19
Slide the air inlet duct into the tabs on the heat shield as shown then secure the air inlet duct to the original mounting point with the original hex bolt removed in Step 2.



Step 20
Make sure that all clamps and hardware are fully tightened. Reconnect the battery cable and start the engine and let it warm up. Shut it off and inspect the installation once more for any loose clamps, wires, or hardware. Test drive & enjoy! Your installation is now complete. Periodically check all clamps and brackets.

If you need any assistance please call 1-800-858-3333 to speak with a representative in our Customer Service Center before returning the product.

WARNING This product can expose you to a chemical or chemicals known to the State of California to cause cancer and birth defects or other reproductive harm.

NOT LEGAL FOR SALE OR USE ON ANY POLLUTION CONTROLLED MOTOR VEHICLE IN CALIFORNIA OR STATES ADOPTING CALIFORNIA EMISSION PROCEDURES.
See Spectreperformance.com for CARB status on each part for a specific vehicle

SPECTRE
Performance

(909) 673-9800

www.spectreperformance.com

© 2017 SPECTRE PERFORMANCE Made in China

176253
9/28/17