

# **SPEED BY SPECTRE®**

*The 400mph Company™*

## **Intake Installation Instructions**

**P/N 9922 (red filter) - P/N 9922B (blue filter)**

**P/N 9922K (black filter) - P/N 9922W (white filter)**

### **Year/Make/Model/Engine**

1999.5-2003 Ford SuperDuty F250/350/450/550, Excursion 7.3L (TD)

#### **Parts List**

- 1- 4" Flex coupler
- 1- 45° 4" coupler
- 1- Intake tube
- 1- Heat shield
- 5- 4" Hose clamps
- 1- Air filter
- 1- Rubber seal

#### **Tools Required:**

- 5/16" Nut driver  
(or flat blade screwdriver)

For filter reorders ask at the special order counter of your local parts store or call:

1-909-673-9800

ask for: P/N HPR0882 (red filter)

P/N HPR0882B (blue filter)

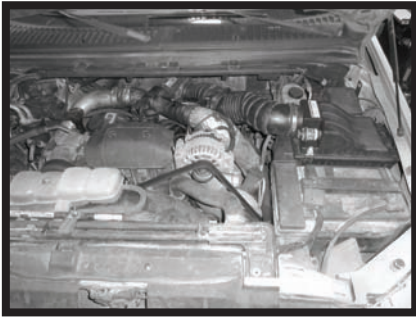
P/N HPR0882K (black filter)

P/N HPR0882W (white filter)



#### **CARB Exempt-No**

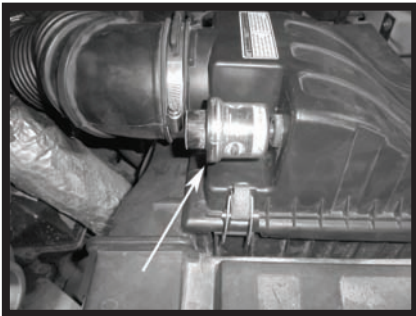
Products that are not CARB exempt are legal in most states, but may not be used in California or states with similar emissions control laws.



### Step 1

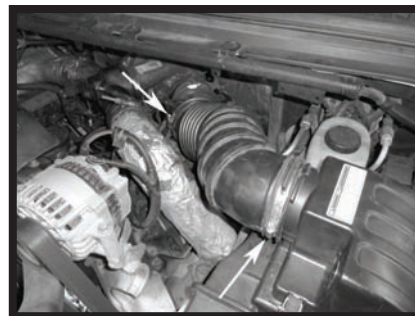
**Safety first!** Before you begin the installation, make sure that the vehicle is in park (or neutral for a manual transmission) with the parking brake set. Disconnect the negative battery terminal and verify that all components that are listed are present. Note: This kit was designed and tested on a stock engine without any custom tuning done to the engine computer. Removing the battery cable may erase the programmed radio stations. The anti-theft code will need to be entered into some radios after the battery cable is connected. The anti-theft code can typically be found in the owner's manual or at your local dealership.

---



### Step 2

Remove the filter minder from the factory air box then remove the filter minder grommet from the factory air box. Some vehicles are equipped with an electronic filter minder, if so disconnect the factory wire harness clip.



### Step 3

Loosen the clamps on the factory intake tube and remove the intake tube from the vehicle.

---



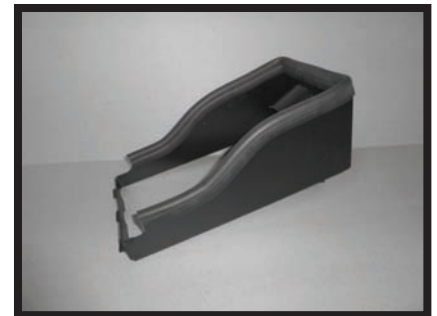
### Step 4

Unclip the air box cover from both sides and pull up and out. Remove the air filter from the air box.



### Step 5

Install the grommet into the new Spectre Performance intake tube. Install the filter minder into the grommet.

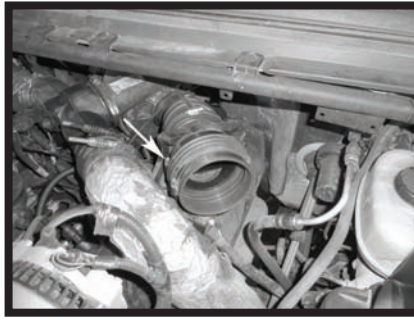


### Step 6

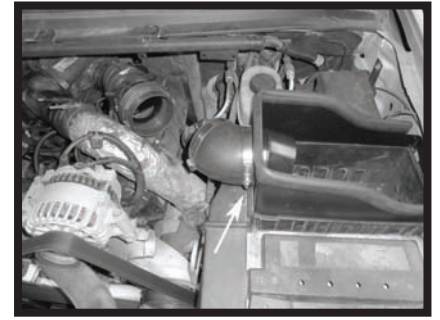
Dress the heat shield with rubber seal as shown.



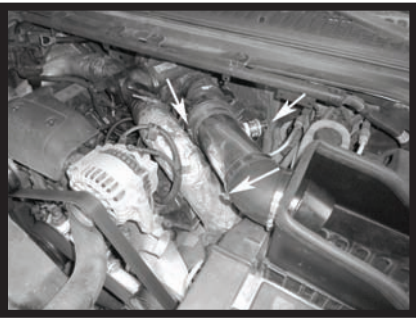
**Step 7**  
Install the heat shield making sure that the tabs on the heat shield are inserted into the lower factory airbox slots, then clip the back section down inside the airbox.



**Step 8**  
Install the flex coupler on the turbo inlet. Install a second clamp but do not tighten at this time.



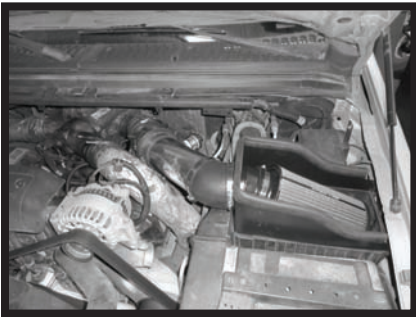
**Step 9**  
Install the angled coupler on the heat shield. Install a second clamp but do not tighten at this time.



**Step 10**  
Install the Spectre Performance intake tube into the flex coupler first then into the angled coupler with the filter minder closer to the turbo. Once the tube is in position and the filter minder is facing the firewall, tighten the clamps. If you have an electronic filter minder, reconnect the factory wire harness clip.



**Step 11**  
Install the filter and fasten it securely.



**Step 12**  
Make sure that all clamps and hardware are fully tightened. Reconnect the battery cable, start the vehicle and let it warm up. Shut off and inspect the installation once more for any loose clamps, wires, or hardware. Test drive & enjoy! Your installation is now complete. Periodically check all clamps.

If you have any difficulties or questions regarding the installation of this intake system, contact the Spectre Performance Technical Department by email - [Tech@spectreperformance.com](mailto:Tech@spectreperformance.com) or by phone(909) 673-9800 Monday thru Friday 6:00am to 2:00pm PST.

**SPEED BY SPECTRE**

*The 400mph Company*

(909) 673-9800

[www.SpeedBySpectre.com](http://www.SpeedBySpectre.com)