

# ARB SLIMLINE ROOF RACK LIGHTBAR

## SPECIFICATIONS AND FEATURES

Input Voltage	12-48V
Power	130 W
Current Draw	9.2A @ 14.4V
Output - RAW	9279 Lumens
Output - Effective	8552 Lumens
Dist @ 1Lux (Single Light)	1 Lux @ 728m
Spread	Horizontal 8° & Vertical 6°
Input Cable Length	330mm (male terminal)
Operating Temperature	-40°C to +65°C (-40°F to +145°F)
Colour Temperature	5500-6500K
Runtime	50,000hrs
Weight	3.07kg
Connector	2-way overmold waterproof
Dimensions	
Width	954mm (37.55")
Length	67mm (2.63")
Height	34mm (1.33")
Certifications	R10, CE, ROHS



## SUPPLIED PARTS

Description	Quantity	Description	Quantity
36inch Lightbar	1	M6 Security bolt	4
Mount bracket	1	M6 Nyloc nut	4
Mount bracket (opposite)	1	M6 Washer	8
Extended bracket	1	M8 Security bolt	4
Extended bracket (opposite)	1	M8 Double washer	2
Clamp bracket	2	M6 Security tool	1
M6 Coach bolt	4	M8 Security tool	1

## CARE AND MAINTENANCE

- There are no user serviceable components inside the Lightbar - DO NOT disassemble.
- Clean with warm soapy water and sponge or soft brush. DO NOT use solvents, scourers or hard bristle brushes. DO NOT use harsh wash chemicals, these will remove the protective clear coat from the Lens.
- Ensure all electrical connectors and wiring loom are secured away from sharp edges.
- Regularly check all mounting and adjusting bolts to ensure they are secured and tight.
- If your Lightbar requires further service or repair, return it to your local ARB distributor.

## WIRING HARNESSES

- ARB recommends the use of the ARB wiring loom #3500810.
- The ARB extension harness #3500820 may also be required depending on the mounting location.

## TORQUE SETTINGS

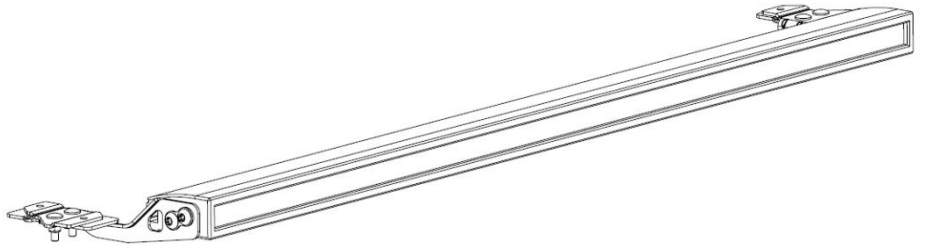
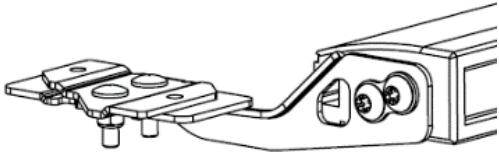
M6 bolts	9 N.m / 7 lb.ft
M8 bolts	22 N.m / 16 lb.ft

TABLE 1.

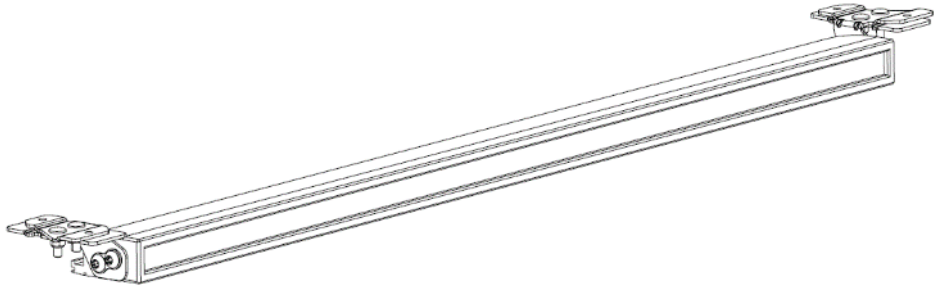
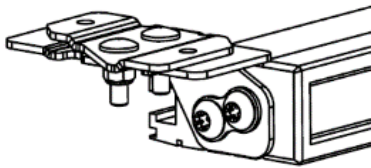
## INSTALLATION

Three mounting options are possible with the brackets supplied. Please select your required mounting option and follow the steps below for installation and adjustment.

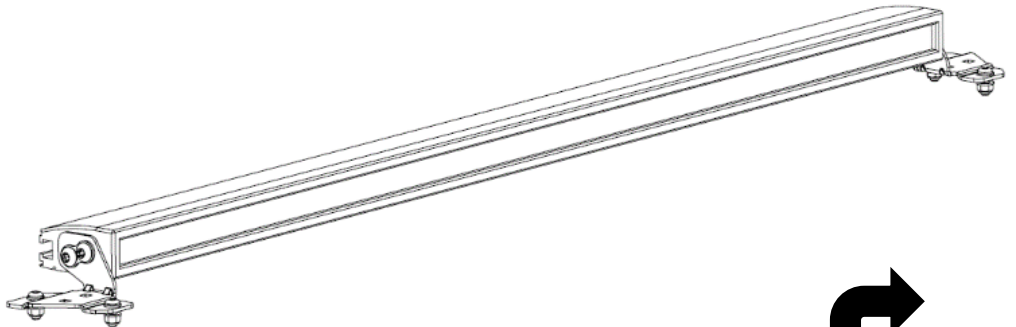
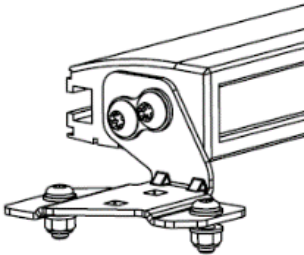
### **BASE RACK Forward.**



### **BASE RACK Beneath.**



### **Pedestal Mount.**



## **BASE RACK Forward Installation.**

### **Step 1.**

Insert M6 Coach bolts into Extended bracket. Insert Extended bracket into BASE RACK channel (Figure 1) and twist bracket into position (Figure 2). Complete for opposite bracket.

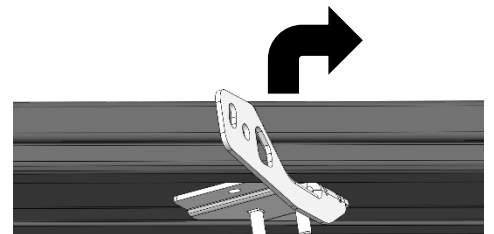


FIGURE 1.

### **Step 2.**

Install Lightbar on Extended brackets. Use M8 Security bolts and M8 Double washer to secure Lightbar onto Extended brackets. Keep bolts finger tight for adjustment later. (Figure 3).

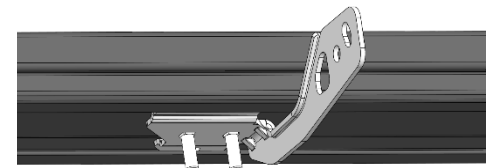


FIGURE 2.

### **Step 3.**

Ensure the Lightbar is central on the BASE RACK and install the Clamp brackets onto the Extended brackets. Use M6 Washer and M6 Nyloc nut to secure the Clamp bracket in place (Figure 4). Tighten all nuts as per torque specified in Table1.

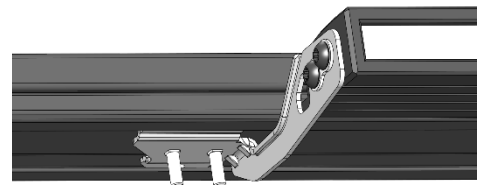


FIGURE 3.

### **Step 4.**

For vertical adjustment, measure the light output height and compare with the Lightbar height on the vehicle. The two measurements should be similar depending on the user preference. Once satisfied with the adjustment, use the security tool provided and tighten all four M8 Security bolts.

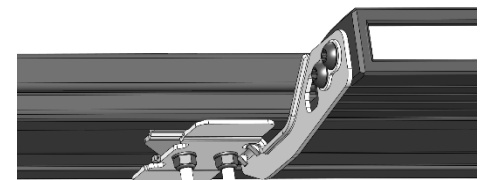


FIGURE 4.

## **BASE RACK Beneath Installation.**

### **Step 1.**

Insert M6 Coach bolts into Mount bracket. Insert Mount bracket into BASE RACK channel (Figure 5) and twist bracket into position (Figure 6). Complete for opposite bracket.

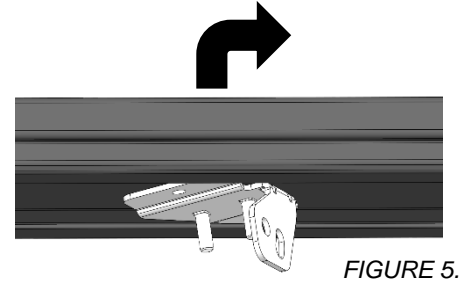


FIGURE 5.

### **Step 2.**

Install Lightbar on Mount brackets. Use M8 Security bolts and M8 Double washer to secure Lightbar onto Mount brackets. Keep bolts finger tight for adjustment later. (Figure 7).

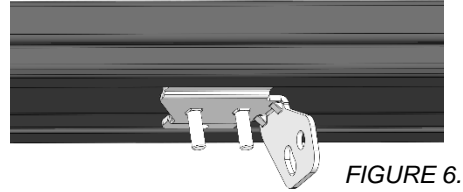


FIGURE 6.

### **Step 3.**

Ensure the Lightbar is central on the BASE RACK and install the Clamp brackets onto the Mount brackets. Use M6 Washer and M6 Nyloc nut to secure the Clamp bracket in place (Figure 8). Tighten nuts as per torque specified in Table1.

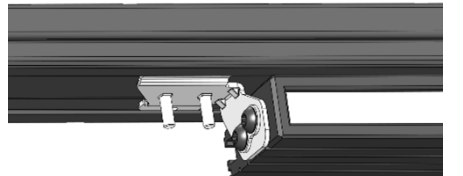


FIGURE 7.

### **Step 4.**

For vertical adjustment, measure the light output height and compare with the Lightbar height on the vehicle. The two measurements should be similar depending on the user preference. Once satisfied with the adjustment, use the security tool provided and tighten all four M8 Security bolts.

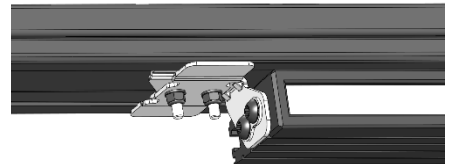


FIGURE 8.

## **Pedestal Mount Installation.**

### **Step 1.**

Install Lightbar on Mount brackets. Use M8 Security bolts and M8 Double washer to secure Lightbar onto Mount brackets. Keep bolts finger tight for later adjustment. (Figure 9).

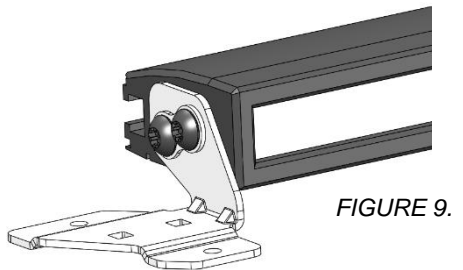


FIGURE 9.

### **Step 2.**

Position Lightbar with brackets onto mounting surface. Mark all four mounting holes. Remove Lightbar and drill four mounting holes using 6.5mm drill bit (not supplied). Use rust prevention on drilled holes.

### **Step 3.**

Place Lightbar over mounting holes again and insert M6 Security bolts, M6 Washers and M6 Nyloc nuts. Tighten all nuts as per torque specified in Table1. (Figure 10).

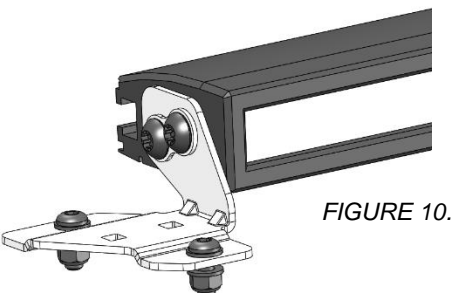


FIGURE 10.

### **Step 4.**

For vertical adjustment, measure the light output height and compare with the Lightbar height on the vehicle. The two measurements should be similar depending on the user preference. Once satisfied with the adjustment, use the security tool provided and tighten all four M8 Security bolts.

## WARRANTY

### ARB PRODUCTS WARRANTY AGAINST DEFECTS

ARB warrants the ARB Products against defects in workmanship and materials for the Warranty Period. If defective workmanship or materials become apparent in the Warranty Period, ARB will replace or repair the defective Product.

The benefits to the customer given by this warranty are in addition to other rights and remedies of the customer under a law in relation to the goods or services to which the warranty relates.

1. In this warranty:
  - a. ARB means ARB Corporation Limited (ABN 31 006 708 756) of 42-44 Garden St, Kilsyth Victoria 3137
  - b. ARB Outlet means an outlet which has been authorised by ARB to sell and fit ARB Products
  - c. ARB Product means products which ARB manufactures or for which ARB is the exclusive supplier
  - d. Product Information means the information about the relevant ARB Product which may be contained in any of: documentation provided with the ARB Product, owner's manual, operating manual, service manual or the manufacturer's manual or labels attached to the ARB Product
  - e. Warranty Period means, in respect of an ARB Product, the period that this warranty against defects applies and which is set out in paragraph 8.
2. To be entitled to claim the warranty, the customer must:
  - a. Have the ARB Product fitted in accordance with the Product Information
  - b. Carry out normal care and maintenance of the ARB Product, including any required by the Product Information
  - c. Provide proof of purchase of the ARB Product
  - d. Make the claim in the Warranty Period.
3. The warranty will not apply in circumstances where the defect is caused by:
  - a. Unusual, improper or negligent use or misuse of the ARB Product
  - b. Incorrect fitting of the ARB Product other than at an ARB Outlet
  - c. Use of non-genuine ARB components in or with the ARB Product
  - d. Use of the ARB Product outside of the requirements of the Product Information.
4. The procedure for the customer to claim the warranty is:
  - a. Return the ARB Product to the nearest ARB Outlet or contact ARB to arrange a time to bring a vehicle fitted with the ARB Product to an ARB Outlet for inspection. Contact details are in paragraph 7 below if further information is required Regarding local outlet details
  - b. Bring proof of purchase of the ARB Product to the ARB Outlet
  - c. ARB will review the ARB Product and advise whether the conditions of this warranty have been met
5. Where ARB accepts a customer's warranty claim, ARB will rectify any defective workmanship or materials at its own expense.
6. Expenses incurred by the customer in claiming the warranty are to be borne by the customer.
7. This warranty is given by:

ARB Corporation Limited  
42-44 Garden Street Kilsyth  
VIC 3137, Australia.  
Phone: 03 9761 6622.  
Fax: 03 9721 9090.  
[www.arb.com.au](http://www.arb.com.au)
8. The period within which a defect in the ARB Products must appear if the customer is to be entitled to claim the warranty is 3 years starting on the date of purchase unless:
  - a. The ARB Product is used in Commercial Use. Commercial Use means use in industry or commerce including (without limitation) use in the mining industry or as a hire vehicle. In this case, the Warranty Period is 1 year
9. The warranty against defects contained in this document replaces any other warranty against defects or voluntary warranty given in relation to the Products.

Our goods come with guarantees that cannot be excluded under the Australian Customer Law. You are entitled to a replacement or refund for a major failure and compensation for any other reasonable foreseeable loss or damage. You are also entitled to have the goods repaired or replaced if the goods fail to be of acceptable quality and the failure does not amount to a major failure.