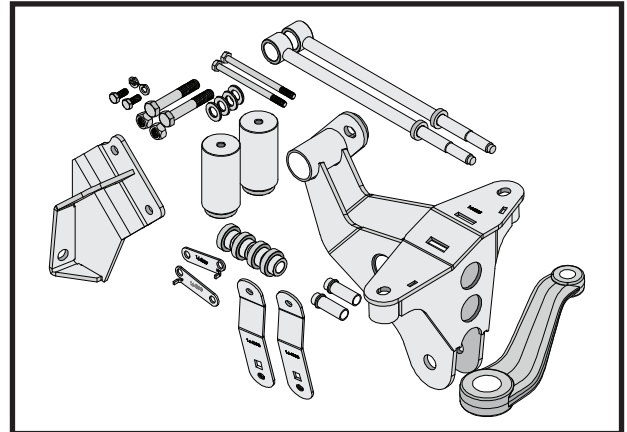


7929 Lincoln Ave. Riverside, CA 92504
 Phone: 951.689.ICON | Fax: 951.689.1016

PART #	DESCRIPTION
67010	05-07 FSD FRONT 7" BOX KIT

COMPONENTS INCLUDED	
(1) 164005 05-07 FSD TRACK BAR BRACKET (2) 164007 05-07 FSD 7" SWAY BAR LINK (2) 164008 05-UP FSD 7" BRAKE LINE DROP BRKT	(2) 167011 05-UP FSD FRONT 4" BUMP STOP SPACER (1) 168040 05-UP FSD 4" DROP PITMAN ARM
HARDWARE INCLUDED	
(1) 164009 LOWER BRAKE INDEX LEFT (1) 164010 LOWER BRAKE INDEX RIGHT (2) 167007 05-UP FSD SWAY BAR ADAPTER SLEEVE (4) 297024 HAT BUSHING 1.005 X .620 X .755	(2) 605011 5/16-18 X 0.750 HHCS (2) 605012 5/16 SPLIT LOCK WASHER (2) 605308 1/2-13 X 3.000 HHCS (2) 605322 1/2-13 C-LOCK NUT (4) 605330 1/2 FLAT WASHER (2) 605804 M8-1.25 X 120MM HHCS
64040H HARDWARE KIT	
(4) 605200 7/16-14 X 1.500 HHCS (4) 605220 7/16-14 NYLOCK NUT (8) 605230 7/16 FLAT WASHER	(4) 605601 3/4-10 X 5.500 HHCS (4) 605620 3/4-10 NYLOCK NUT (8) 605630 3/4 FLAT WASHER
TOOLS REQUIRED	
FLOOR JACK JACK STANDS BRASS HAMMER STEEL HAMMER TORQUE WRENCH 10MM SOCKET / WRENCH 13MM SOCKET / WRENCH 15MM SOCKET / WRENCH 16MM SOCKET / WRENCH 18MM SOCKET / WRENCH	21MM SOCKET / WRENCH 24MM SOCKET / WRENCH 30MM SOCKET / WRENCH 46MM SOCKET / WRENCH 3/8 SOCKET / WRENCH 1/2 SOCKET / WRENCH 5/8 SOCKET / WRENCH 3/4 SOCKET / WRENCH 15/16 SOCKET / WRENCH
TECH NOTES	
N/A	



WARNING!

**** READ ALL INSTRUCTIONS THOROUGHLY FROM START TO FINISH BEFORE BEGINNING INSTALLATION! IF THESE INSTRUCTIONS ARE NOT PROPERLY FOLLOWED SEVERE FRAME, SUSPENSION AND TIRE DAMAGE MAY RESULT TO THE VEHICLE!**

**** ICON VEHICLE DYNAMICS RECOMMENDS THAT YOU EXERCISE EXTREME CAUTION WHEN WORKING UNDER A VEHICLE THAT IS SUPPORTED WITH JACK STANDS.**

**** ICON VEHICLE DYNAMICS RECOMMENDS ALL INSTALLATION TO BE PERFORMED BY A PROFESSIONAL SHOP/SERVICE TECHNICIAN. PRODUCT FAILURE CAUSED BY IMPROPER INSTALLATION WILL NOT BE COVERED UNDER ICON'S WARRANTY POLICY.**

INSTALLATION

1. Lift the front end of the truck. Support the frame at the frame rail with jack stands. The best positions to support the front of the truck are either the frame rails just behind the front bumper or on the body mounts just behind the front fenders. If lifting from the body mounts, be careful not to pinch the parking brake line on the driver's side. NEVER WORK UNDER AN UNSUPPORTED VEHICLE. Remove front tires.

2. Remove the sway bar links from the sway bar using an 18mm. Leave them connected to the differential. [FIGURE 1]

FIG.1

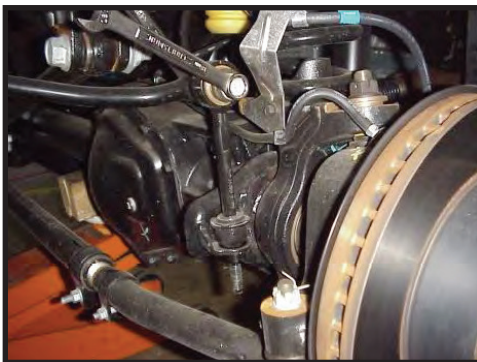


FIG.2



3. Disconnect the upper brake line brackets from the frame using a 13mm and lower brake line brackets from the differential using a 10mm. [FIGURE 2]

- 4.** On the driver side of the track bar, remove the nut and the upper track bar bolt using (2) 30mm. **[FIGURE 3]**

FIG.3



- 5.** Support the differential with a floor jack and remove the front shocks. The shocks are limiting droop so **MAKE SURE THE AXLE IS SUPPORTED OR THE AXLE WILL FALL** when the shocks are removed. Use a 18mm on the bottom and a 16mm on the stem of the shock.

- 6.** As you slowly lower the differential, the coils will unload from the mounts and can be removed. Be careful not to stretch or damage any lines connected to the differential or radius arms.

- 7.** Remove the stock track bar bracket: Remove the 2 bolts going up into the frame using an 18mm and the 3 nuts on the cross member using a 21mm. Remove the stud plate from cross member and fully remove the track bar bracket.

- 8.** Refer to 4-Link instructions (PN: 61500<2005-2010>) and install now or Radius-Arm kit (PN 64040<2005-2010>).

- 9.** If using Radius-Arm kit, Caster Cams are required. Refer to Caster Cam instructions (PN: 63530) and install now.

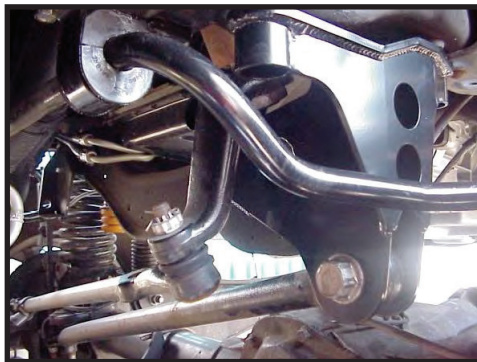
- 10.** Lower the differential just enough to install the new springs. Place the original rubber isolator on top of the new coil and install. Be careful to not stretch or damage any lines. Check the rotation/clocking of the coil to make sure it is properly seated in the lower spring perch.

- 11.** Lift the differential enough to install the new ICON shocks. Be careful not to lift the truck off of the jack stands. Use the original bolt on the lower shock mount and tighten with an 18mm [Torque to factory spec]. Tighten the stem-top nut using a 3/4 (Refer to shock instructions). Lower the differential. The shocks will now be holding the weight of the differential.

- 12.** Refer to Pitman-Arm instructions (PN: 191002) and replace pitman arm now.

- 13.** Install the new track bar bracket using stock hardware. Hold the track bar bracket in position and insert the stud plate through the cross member and bracket. Use a small amount of thread locker on threads, and install nuts using a 21mm. Use thread lock on frame bolts and install using an 18mm [Torque to factory spec]. **[FIGURE 4]**

FIG.4



- 14.** If an ICON adjustable track bar (PN: 64030<Bushing> OR 64031<Bearing Upgrade>) was purchased, refer to track bar instructions and install now.

- 15.** Re-install the track bar into the new bracket using the stock hardware. You may have to raise or lower the differential to help line up the holes. Using (2) 30mm [Torque to factory spec]

- 16.** Remove the steering stabilizer from the factory frame bracket using a 15mm. Remove the bracket from the frame using an 18mm. Remove the steering stabilizer from the drag link using an 18mm, then use a ball joint separator fork or a hammer to break the taper loose and remove the stabilizer.

- 17.** Mount the stabilizer drop bracket to the frame and tighten using factory hardware and an 18mm [Torque to factory spec]. Connect the steering stabilizer to the new bracket using factory hardware [Torque to factory spec].

- 18.** Pry the front bump stops out of the bump stop cup. Remove the bolt in the center of the cup. Install the bump stop spacer between the cup and the frame with the supplied bolt. The cup has a flat side on its outer flange. Rotate the flat side to be near the coil for added clearance.

- 19.** Push the bump stop back into cups. They should clip or pop into place.

20. Install sway bar links (PN 164030) using 1/2 hardware and a 3/4 [Torque to 78 ft-lbs].

21. Hand grease all bushings for links prior to installing. When greasing bushings, try to fill all bushing veins with grease, with minimal grease on outside and inside surfaces. Also lightly grease inside rim and both ends of bushing. Push bushing into bushing housing of the link, then turn over and push the second bushing in. Lightly grease 1 end of the bushing sleeve and push in until flush with bushings. [FIGURE 5]

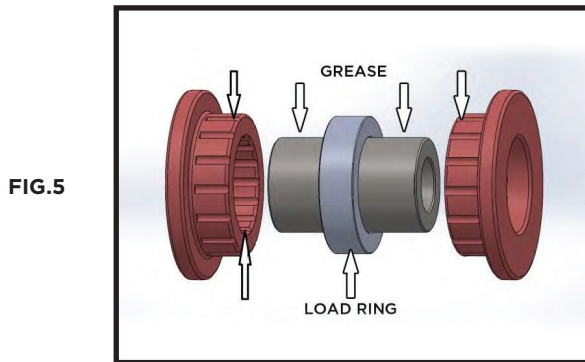


FIG.5

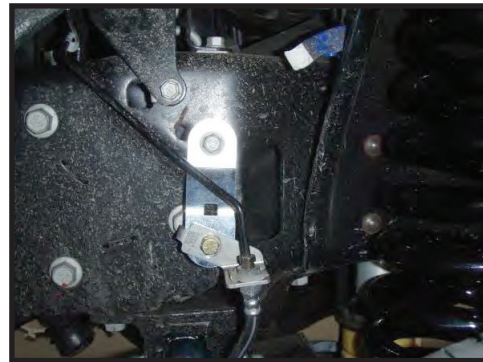


FIG.6

22. Reconnect the sway bar to the stock links using an 18mm [Torque to factory spec].

23. If ICON brake line kit (PN: 61100<2005-2007>) has been purchased, refer to brake line instructions and install now.

24. Install the upper brake line brackets using the factory bolts. This bracket uses the factory bolt on the top and a supplied 5/16 bolt on the bottom. Using (2) 1/2 [Torque to 19 ft-lbs]. Carefully bend and re-route hard line. [FIGURE 6]

25. If an ICON dual steering stabilizer kit (PN: 65000) has been purchased, refer to steering stabilizer instructions and install now.

26. Reinstall tires and lower vehicle to the ground.

27. Align the vehicle before driving.

VERIFY ALL FASTENERS ARE PROPERLY TORQUED BEFORE DRIVING VEHICLE.

RETORQUE ALL NUTS, BOLTS AND LUGS AFTER 100 MILES AND PERIODICALLY THEREAFTER.

ICON VEHICLE DYNAMICS LIMITED LIFETIME WARRANTY

ICON Vehicle Dynamics warrants to the original retail purchaser who owns the vehicle on which the product was originally installed. ICON Vehicle Dynamics does not warrant the product for finish, alterations, modifications and/or installation contrary to ICON Vehicle Dynamics instructions. ICON Vehicle Dynamics products are not designed, nor are they intended to be installed on vehicles used in race applications, for racing purposes or for similar activities. (A "race" is defined as any contest between two or more vehicles, or a contest of one or more vehicles against the clock, whether or not such contest is for a prize). This warranty does not include coverage for police or taxi vehicles, race vehicles, or vehicles used for government or commercial purposes. Also excluded from this warranty are sales outside of the United States of America and Canada.

ICON Vehicle Dynamics' obligation under this warranty is limited to the repair or replacement, at ICON Vehicle Dynamics' discretion, of the defective product. Any and all costs of removal, installation or re-installation, freight charges and incidental or consequential damages are expressly excluded from this warranty. Items that are subject to wear are not considered defective when worn and are not covered.

ICON Vehicle Dynamics components must be installed as a complete kit as shown in our current application guide. Any substitutions or exemptions of required components will immediately void the warranty. Some finish damage may happen to parts during shipping and is not covered under warranty.

This warranty is expressly in lieu of all other warranties expressed or implied. This warranty shall not apply to any product that has been improperly installed, modified or customized subject to accident, negligence, abuse or misuse.