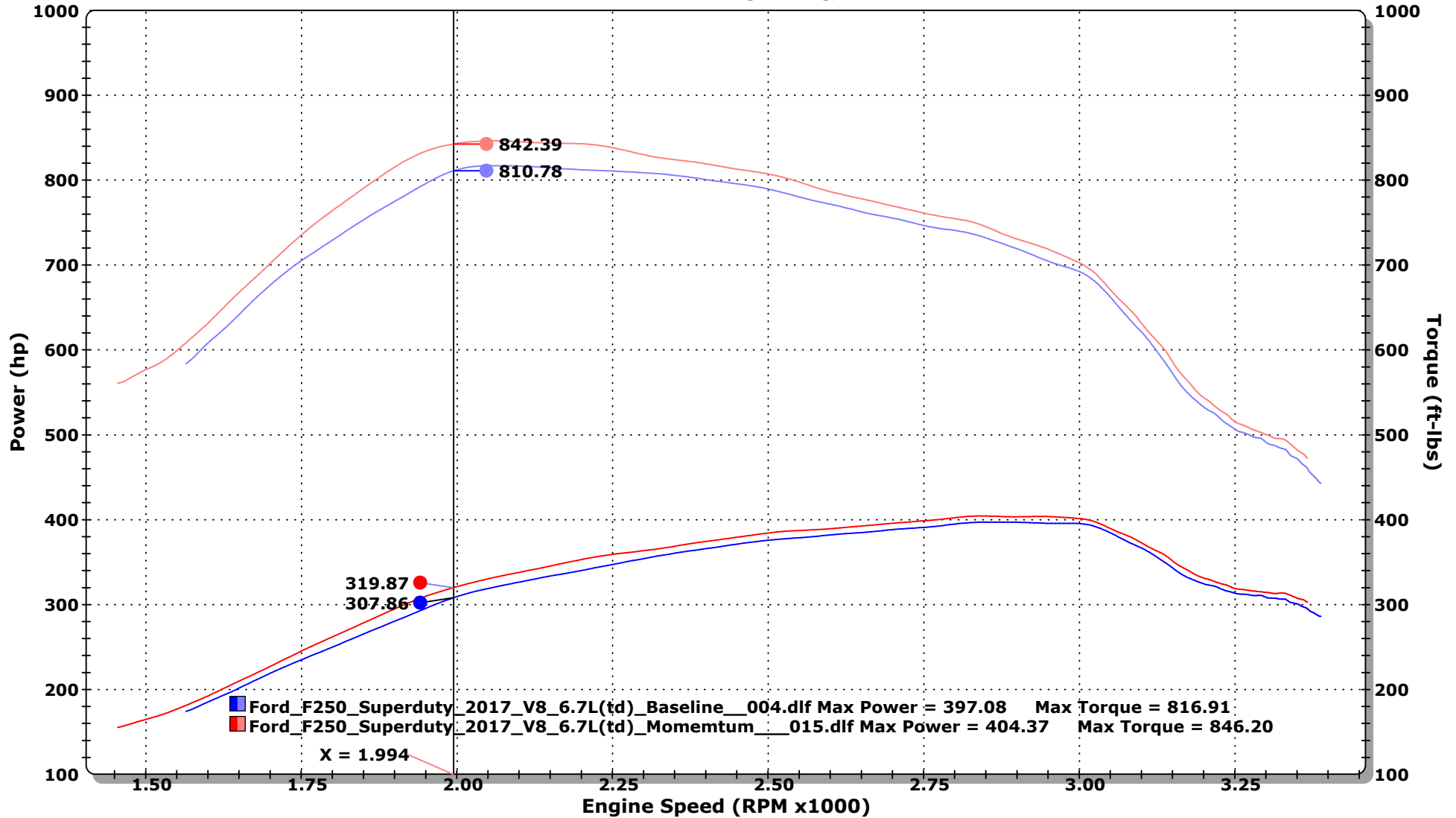




# ENGINEERED ADRENALINE

DYNOJET RESEARCH  
Advanced FLOW Engineering, INC.

CF: SAE Smoothing: 5



■ Ford\_F250\_Superduty\_2017\_V8\_6.7L(td)\_Baseline\_\_004.dlf - 2/1/2017 9:36:36 AM Run Type: RO Run Conditions: 62.25 °F, 29.41 in-Hg, Humidity: 33%, SAE: 0.98  
 Baseline  
 Max Power = 397.08 Max Torque = 816.91  
 OE AIS, OE Exh, 50% Brake

■ Ford\_F250\_Superduty\_2017\_V8\_6.7L(td)\_Momentum\_\_015.dlf - 2/10/2017 8:20:38 AM Run Type: RO Run Conditions: 63.61 °F, 29.35 in-Hg, Humidity: 67%, SAE: 1.00  
 Momentum AIS 50-73006  
 Max Power = 404.37 Max Torque = 846.20  
 Momentum AIS, OE Exh, 50% Brake, after miles.