



INSTALLATION INSTRUCTIONS

PLATINUM WHEEL TO WHEEL STEP BAR

APPLICATION:

1999-2016 Ford F250/F350 Crew/Super Cab 8ft bed

PART NUMBER:

24-54230, 24-54235, 24-54510, 24-54515

AUTOMOTIVE PRODUCTS,

ITEM	QUANTITY	DESCRIPTION	TOOLS NEEDED
1	2	STEP BARS	17MM SOCKET
2,3	2	FRONT MOUNTING BRACKETS (2) DRIVERS SIDE, (3) PASSENGER SIDE	18MM SOCKET
4,7	4	CENTER MOUNTING BRACKETS (4,5) DRIVERS SIDE, (6,7) PASS. SIDE	7/16" DRILL BIT
8,9	2	BED MOUNTING BRACKET (TOP) (8) DRIVERS SIDE, (9) PASSENGER SIDE	3/4" SOCKET
10,11	2	BED MOUNTING BRACKET (BOTTOM) (10) DRIVERS SIDE, (11) PASS. SIDE	RATCHET
12	2	ISOLATOR ASSEMBLY	TORQUE WRENCH
13	2	1/2" HEX HEAD BOLTS	
14	2	1/2" FLAT WASHERS	
15	2	1/2" LOCK WASHERS	
16	1	M12 X 45MM LONG BOLT PLATE (DRIVERS SIDE)	
17	1	M12 X 45MM BOLT PLATE (PASSENGER SIDE)	
18	2	M12 HEX NUTS	
19	2	M12 FLAT WASHERS	
20	2	M12 LOCK WASHERS	
21	14	M10 HEX NUTS	
22	10	M10 NUT CLIPS	
23	24	M10 X 40MM HEX HEAD BOLTS	
24	24	M10 LOCK WASHERS	
25	38	M10 FLAT WASHERS	
26	2	M10 X 120MM HEX HEAD BOLTS	
27	12	M10 BUTTON HEAD BOLTS	
28	12	M10 TOOTHED LOCK WASHER	
29	12	M10 SMALL FLAT WASHERS	
30	2	SQUARE PLATIC RETAINERS	
31	2	FRONT MOUNTING BRACKET SPACER	

ANTI-SEIZE LUBRICANT MUST BE USED ON ALL STAINLESS STEEL FASTENERS TO PREVENT THREAD DAMAGE AND GALLING

PROCEDURE

1. Remove contents from box, verify if all parts listed are present and free from damage.

Carefully read and understand all instructions before attempting installation.

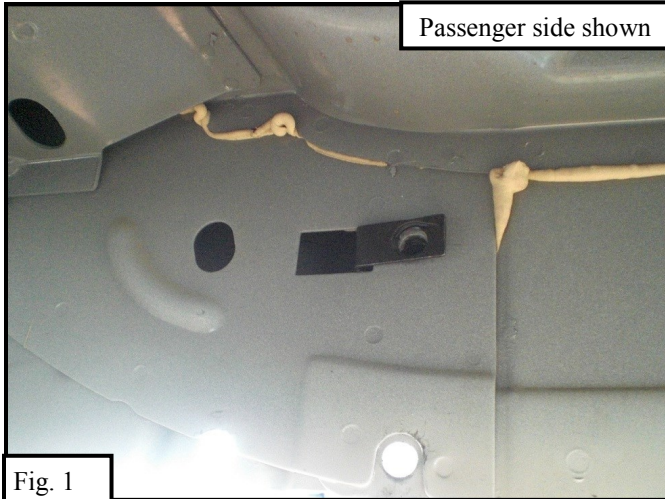
Failure to identify damage before installation could lead to a rejection of any claim.



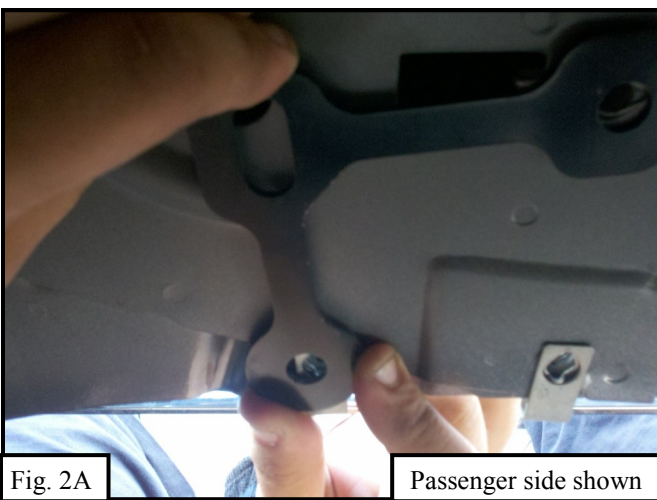
Westin Automotive Products, Inc.
320 W. Covina Blvd
San Dimas, Ca. 91773

Thank you for choosing Westin products
for additional installation assistance please call
Customer Service (800) 793-7846

- Starting on the drivers side front, locate the front mounting bracket location and remove any tape covering the holes, insert (1) M10 nut clip in the upper right mounting hole (fig 1). Take the front mounting bracket and align it to the corresponding mounting holes. NOTE: For 2010-up model years place (1) front mounting bracket spacer plate between the rocker panel and the front mounting bracket before attaching (fig 2A). Attach the mounting bracket to the M10 nut clip using (1) M10 hex head bolt, (1) M10 lock washer, and (1) M10 flat washer. Do not fully tighten at this time. Attach the front mounting bracket to the corresponding holes in the pinch weld using (2) M10 hex head bolts, (4) M10 flat washers, (2) M10 lock washers, and (2) M10 hex nuts. Do not fully tighten at this time. (fig 2)



- Move to the first center mounting bracket location, and insert (2) M10 nut clips (fig 3), attach the center mounting bracket to the corresponding nut clips using (2) M10 hex head bolts, (2) M10 lock washers, and (2) M10 flat washers. Attach the center mounting bracket to the holes in the pinch weld as stated in step 2. Do not fully tighten at this time. (fig 4)
- Repeat step 3 to mount second center bracket.



- Move just behind the cab and locate the rear bracket mounting location (fig 5). (for 08-up models on the drivers side the plastic fuel line clip and the mounting hole must be enlarged with a 7/16 drill bit. To enlarge the holes remove the plastic clip and remove the two factor nut clips and drill through the two existing holes with the 7/16" drill bit (fig 6,7). For 99-07 the horizontal mounting hole must be added to the mounting location).

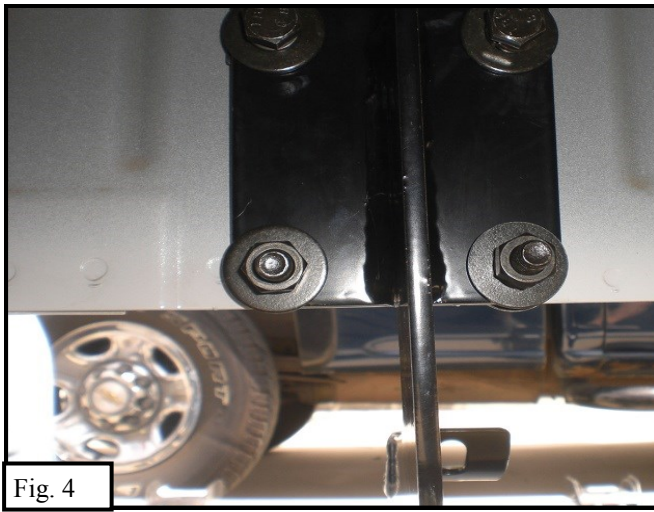


Fig. 4



Fig. 5



Fig. 6



Fig. 7

6. Insert (1) M12 long bolt plate into the mounting location (fig 8), once inserted thread on (1) plastic retainer to keep the bolt plate from moving. Take the drivers side rear mounting bracket (top) and attach it to the inserted bolt plate using (1) M12 flat washer, (1) M12 lock washer, and (1) M12 hex nut. Do not fully tighten at this time. Insert the plastic fuel line clip back in its original position and attach the rear mounting bracket (top) to this hole using (1) M10 hex head bolt (2) M10 flat washers, (1) M10 lock washer, and (1) M10 hex nut. Do not fully tighten at this time. (For 99-07)the horizontal hole must be added locate the corresponding hole in the rear mounting bracket (top) and mark these holes on the mounting location. Remove the previously installed rear mounting bracket (top) and drill the marked holes with the 7/16" drill bit then attach using M10 hardware as stated above.) (fig 9)

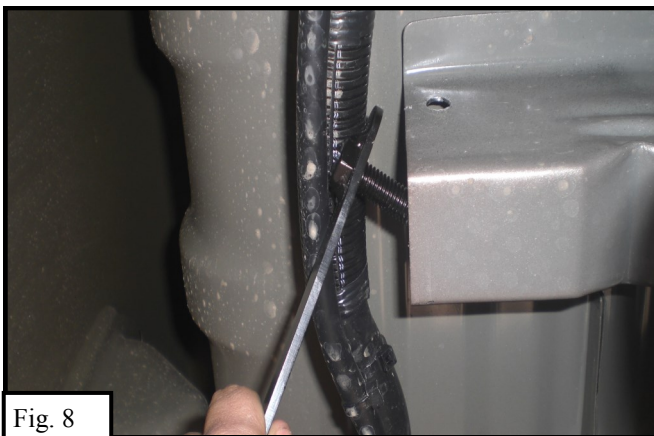


Fig. 8

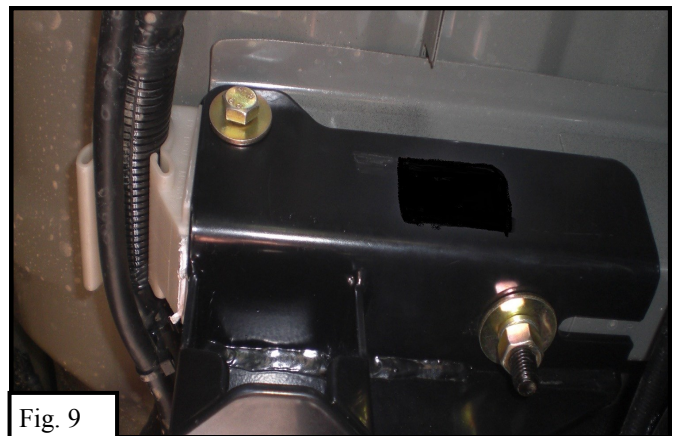
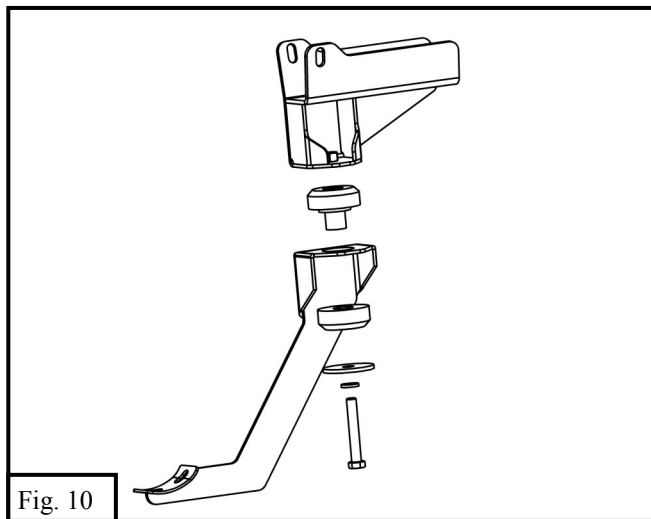


Fig. 9

7. Take the isolator assembly and the rear mounting bracket (bottom) and attach to the rear mounting bracket (top) as shown in figure 10. do not fully tighten at this time.
8. Take the drivers sides step bar and place it on the cradles attach it to the front mounting bracket using (1) 1/2" hex head bolt, (1) 1/2" lock washer, and (1) 1/2" flat washer. Do not fully tighten
9. Attach the step bar to the cradles using (6) M10 button head bolt, (6) M10 toothed lock washer, and (6) M10 small flat washers. Do not fully tighten at this time.
10. Align and adjust step bar and brackets as needed and tighten all hardware at this time. Torque all 1/2" hardware to 50-55 ft lbs, M12 to 45-50 ft lbs and M10 to 35-40 ft lbs
11. Repeat steps 2-10 for passenger side



CARE INSTRUCTIONS

- REGULAR WAXING IS RECOMMENDED. DO NOT USE ANY TYPE OF POLISH OR WAX THAT MAY CONTAIN ABRASIVES.
- STAINLESS STEEL PRODUCTS CAN BE CLEANED WITH MILD SOAP AND WATER. STAINLESS STEEL POLISH SHOULD BE USED TO POLISH SMALL SCRATCHES.
- GLOSS BLACK FINISHES SHOULD BE CLEANED WITH MILD SOAP AND WATER.



Westin Automotive Products, Inc.
320 W. Covina Blvd
San Dimas, Ca. 91773

Thank you for choosing Westin products
for additional installation assistance please call
Customer Service (800) 793-7846
www.westinautomotive.com

Westin

SIGNATURE OF QUALITY

AUTOMOTIVE PRODUCTS, INC.



WARNING



Failure to follow these instructions could lead to death, personal injury, and / or property damage.

FASTENERS:

All Westin supplied fasteners must be utilized and installed in accordance with the installation instructions and apply torque to the specifications as defined. **DOUBLE CHECK ALL FASTENERS BEFORE INITIAL USE, AND PERIODICALLY IN THE FUTURE TO ENSURE PROPER FUNCTION AND SAFETY.**

DRILLING:

Most Westin products do not require drilling for installation. If drilling is defined as required, use caution when drilling a vehicle. **FAILURE TO REVIEW AN AREA TO BE DRILLED MAY RESULT IN PERSONAL INJURY AND/OR INJURY TO OTHERS AS WELL AS VEHICLE DAMAGE.**

EYE PROTECTION:

ALWAYS WEAR SAFETY GLASSES OR GOGGLES DURING THE INSTALLATION PROCESS TO AVOID PERSONAL INJURY.

MAXIMUM TOWING/CARRYING CAPACITY:

The Westin Receiver Hitches will have a visible tow rating label affixed directly on the product. User should never exceed the vehicle manufacturers maximum tow and weight rating regardless of the capacity of the hitch. **FAILURE TO FOLLOW THESE GUIDELINES WILL VOID THE WESTIN WARRANTY AND MAY RESULT IN PERSONAL INJURY AND/OR INJURY TO OTHERS AS WELL AS VEHICLE DAMAGE.**

Westin
SIGNATURE OF QUALITY

Westin Automotive Products, Inc.
320 W. Covina Blvd
San Dimas, Ca. 91773