



**SPYDER**<sup>TM</sup>



**WWW.SPYDERAUTO.COM**

*AUTOMOTIVE PERFORMANCE LIGHTING*

**SPYDER TAIL LIGHT  
INSTALLATION GUIDE VOL.01**



**SPYDER™**

**Table of Contents**

<b>Tail Light Installation Guide - English</b>	<b>P. 03</b>
<b>Tail Light Installation Guide - Spanish</b>	<b>P. 10</b>
<b>Registration Card - English</b>	<b>P. 17</b>
<b>Registration Card - Spanish</b>	<b>P. 18</b>





**SPYDER™**



**QUICK GUIDE**

**PLEASE DO NOT RETURN THE PRODUCT TO THE STORE**

**Please contact Spyder Auto directly if you have any questions  
or concerns regarding our products**

Please contact Spyder Auto at (833) 513-1350

email : [techsupport@spyderauto.com](mailto:techsupport@spyderauto.com)

Spyder Auto  
19395 E. Walnut Dr. North  
City of Industry, CA 91748

Office Hours  
Mon- Fri 8:00 AM-5:30 PM PST  
[www.spyderauto.com](http://www.spyderauto.com)

 **SPYDER™** is a registered trademark, Copyright © 2013 all rights reserved

# 4

## WARNING PRE-INSTALLATION CHECK LIST



Please read carefully before installation

Due to electrical wiring needed, professional installation is highly recommended. Spyder Auto is not responsible for any damages or injuries due to improper installation.



Safety Gloves



Soft Towel

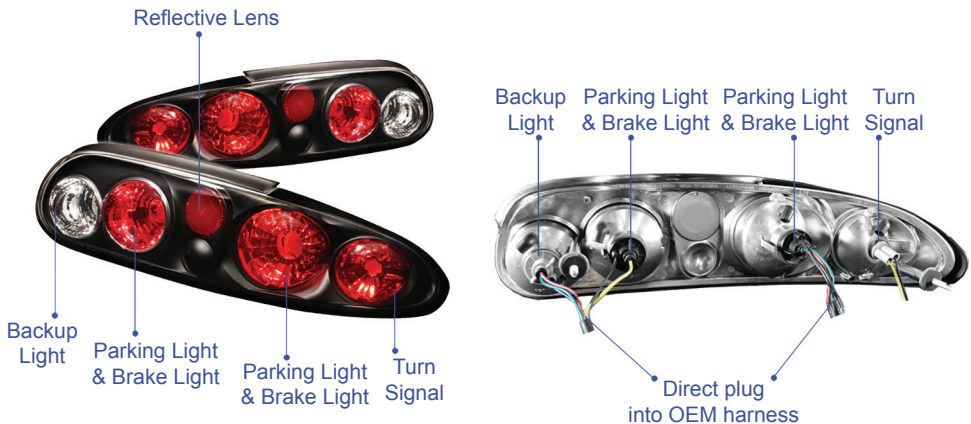


Electrical Tape



Phillips and Flat  
Screw Driver

### Euro Tail Lamps



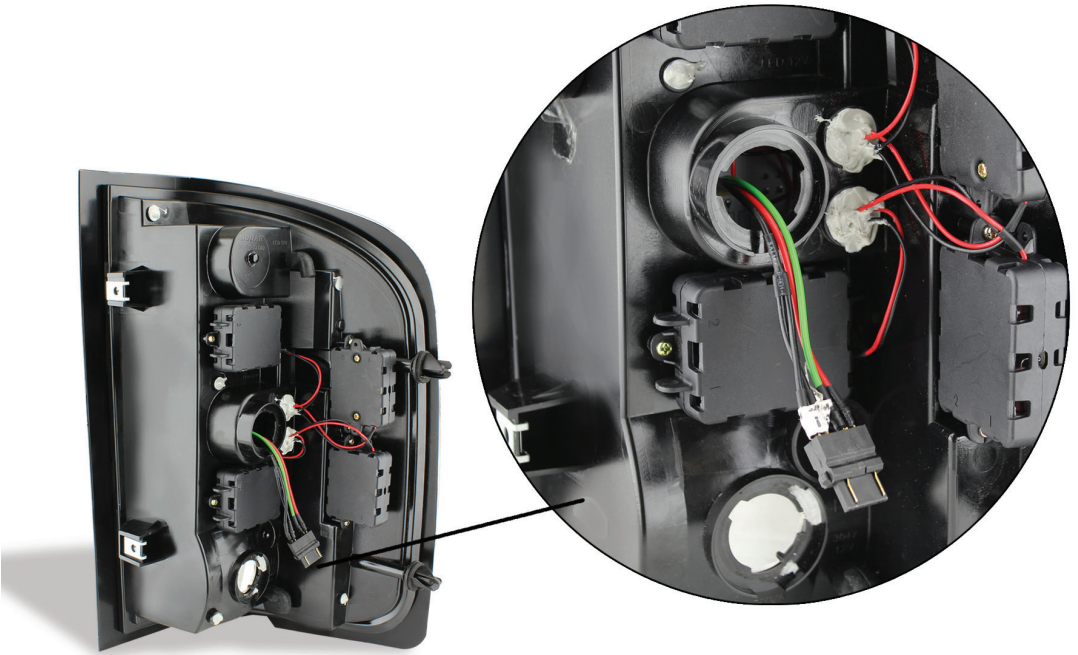
#### Helpful Hints:

- **Fitment is not guaranteed if the vehicle has been in a previous collision.**
- **To avoid scratches and damage to your Spyder Auto tail Lights, never sit the item with the lens face down.**
- **Do not modify, alter or tamper with this product in any way.**
- **Failure to comply will void your warranty.**

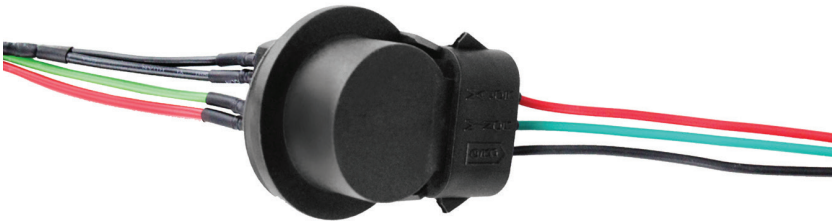
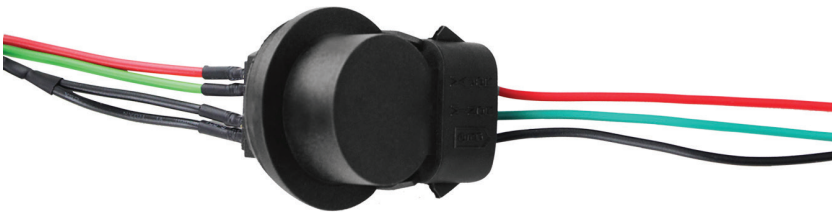


## LED TAIL LAMPS

5

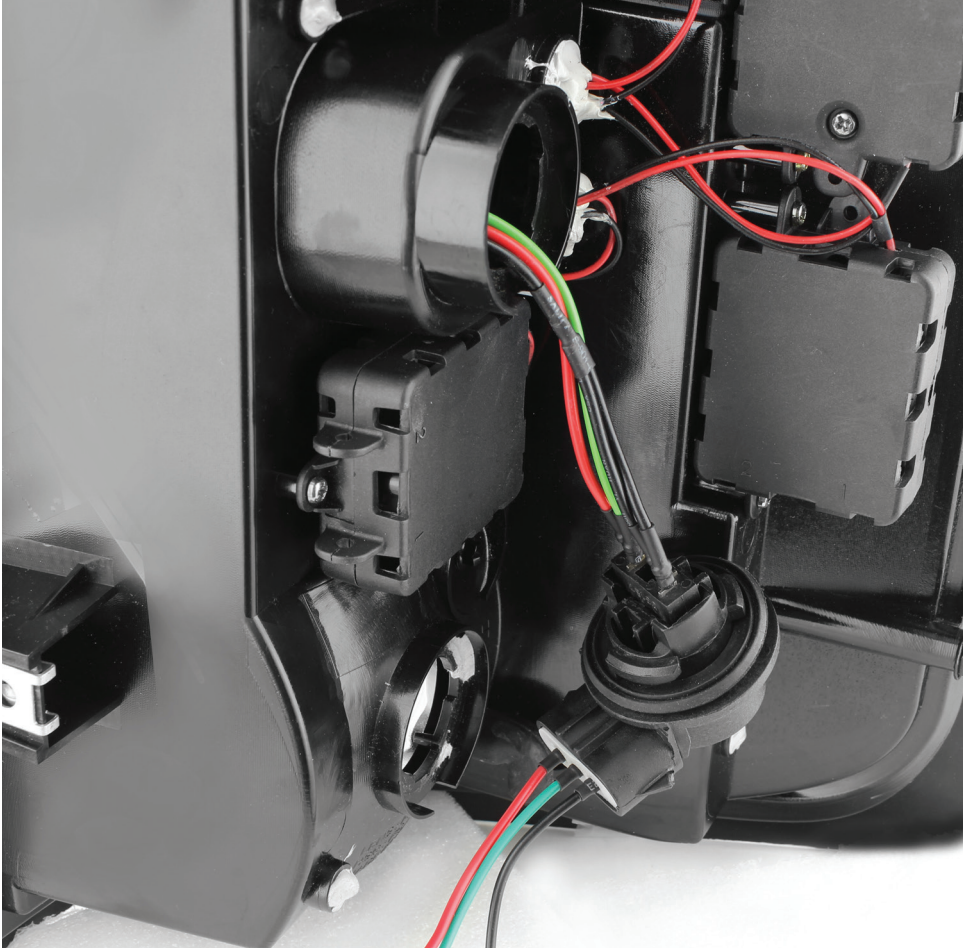


**This is your LED wiring harness, it plugs into your OEM bulb socket. Beneath the LED harness is a place for your OEM reverse socket.**



**Please connect the wires to the corresponding colors, otherwise your LEDs will not work**



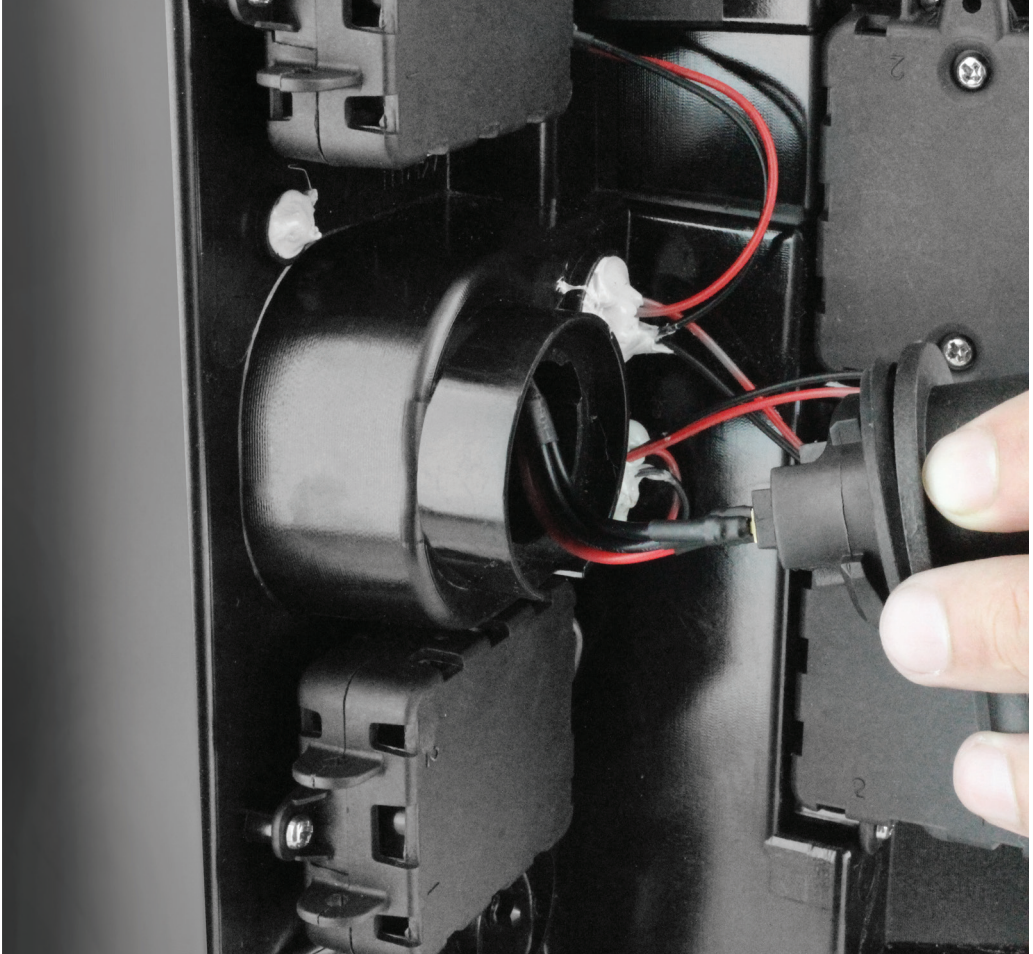


**After you've correctly connected the LED harness to the socket make sure all connections are in place tight.**



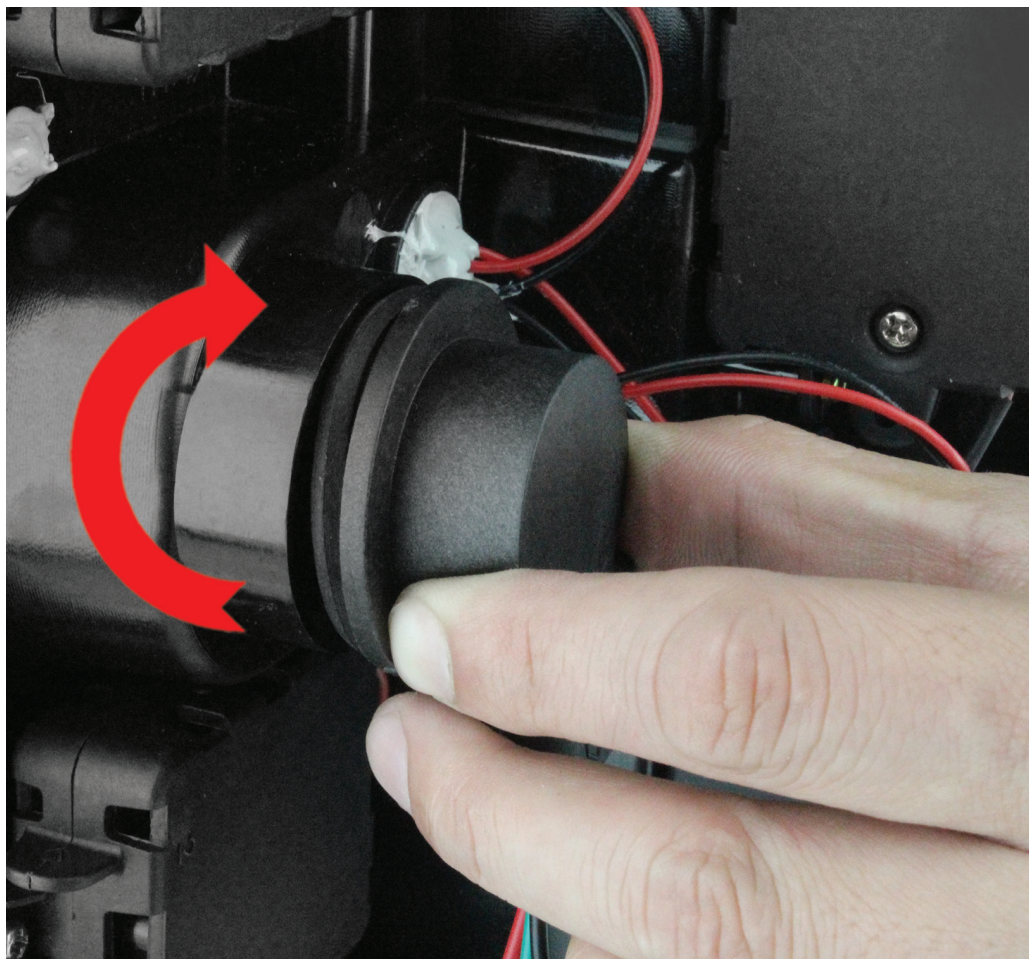
## LED TAIL LAMPS

7



**Before you place your socket inside of the housing , please ensure that the rubber gasket is properly seated.**

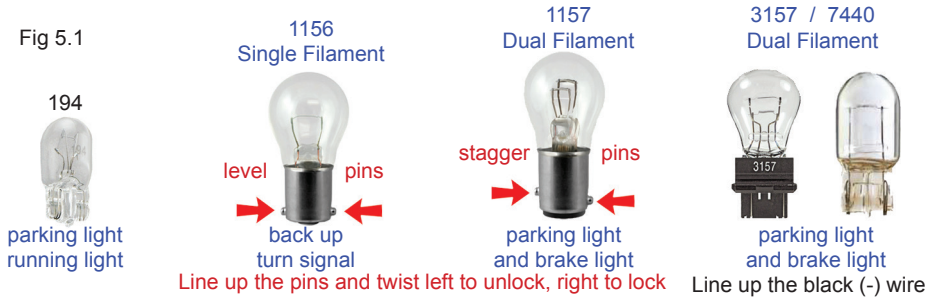




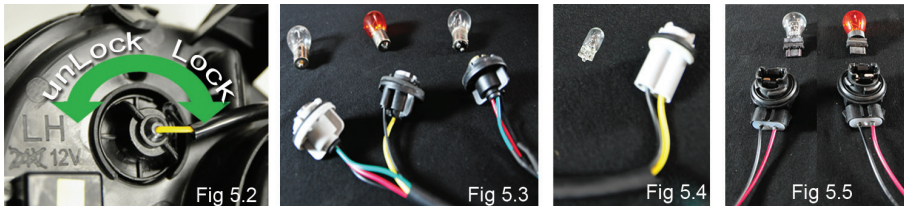
**Once the gasket is secured place the socket into the housing  
twist and lock into place.**



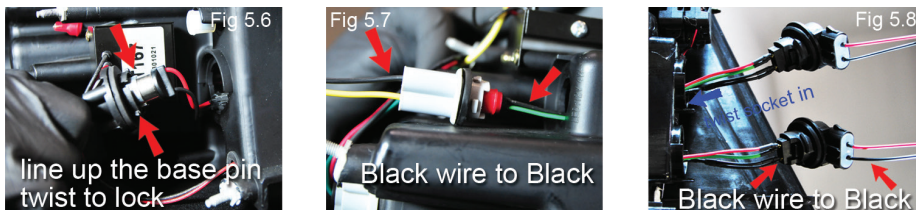
- Using rubber gloves locate your light bulb sockets. Identify the parking lamp, brake, turn signal, and back up bulb



- Using rubber gloves; (Fig 5.2) twist the parking lamp / brake lamp socket to the left to unlock. (Fig 5.4 and Fig 5.5) pull out the OEM light bulb and connect the tail light sockets. Fig 5.3, Twist left to unlock, right to lock



- Fig 5.6 1156 and 1157, line up the base pins and twist right to lock.  
 Fig 5.7 194 and 7440 plug the LED wire from the tail lamp socket and  
 Fig 5.8 3157 by connecting both black (-) wires together.



- Neatly tuck the excess wiring into the tail lamp and turn the socket to the right to tightly secure the socket into the tail lamps. in Fig 5.2
- Reuse your OEM reverse bulb. However, if you have a full LED tail light you will not use your original reverse bulb.
- The majority of Spyder Auto's tail lamps use LEDs as working turn signals. However, if your tail light does not come with LED turn signals please use your OEM bulb.



**SPYDER™**



**Guía Rápida**

**NO REGRESE EL PRODUCTO DONDE LO ADQUIRIÓ**

**Si tiene alguna duda favor de contactar a nuestro departamento de servicio al (833) 513-1350 o por correo electrónico a [techsupport@spyderauto.com](mailto:techsupport@spyderauto.com)**

Spyder Auto  
19395 E. Walnut Dr. North  
City of Industry, CA 91748

Horario De Oficina:  
Lun-Vie 8:00AM-5:30PM Pacifico  
[www.spyderauto.com](http://www.spyderauto.com)



**SPYDER™**

es una marca registrada., Copyright © 2013 Todos los derechos Reservados



# ATENCIÓN: LISTA DE HERRAMIENTAS PARA INSTALACION

11



Por favor lea cuidadosamente antes de instalar

Debido al riesgo de un corto circuito,  
se recomienda instalacion profesional.



Guantes



Toalla



Cinta Electrica



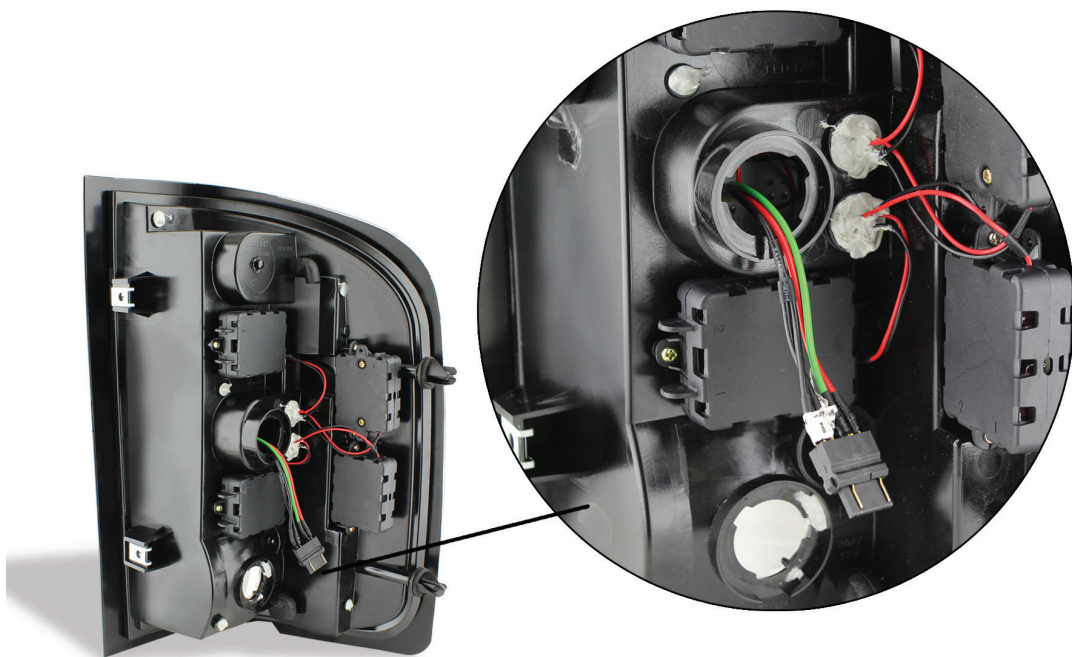
Destornillador  
plano y de cruz.

## Luces LED



### Tips:

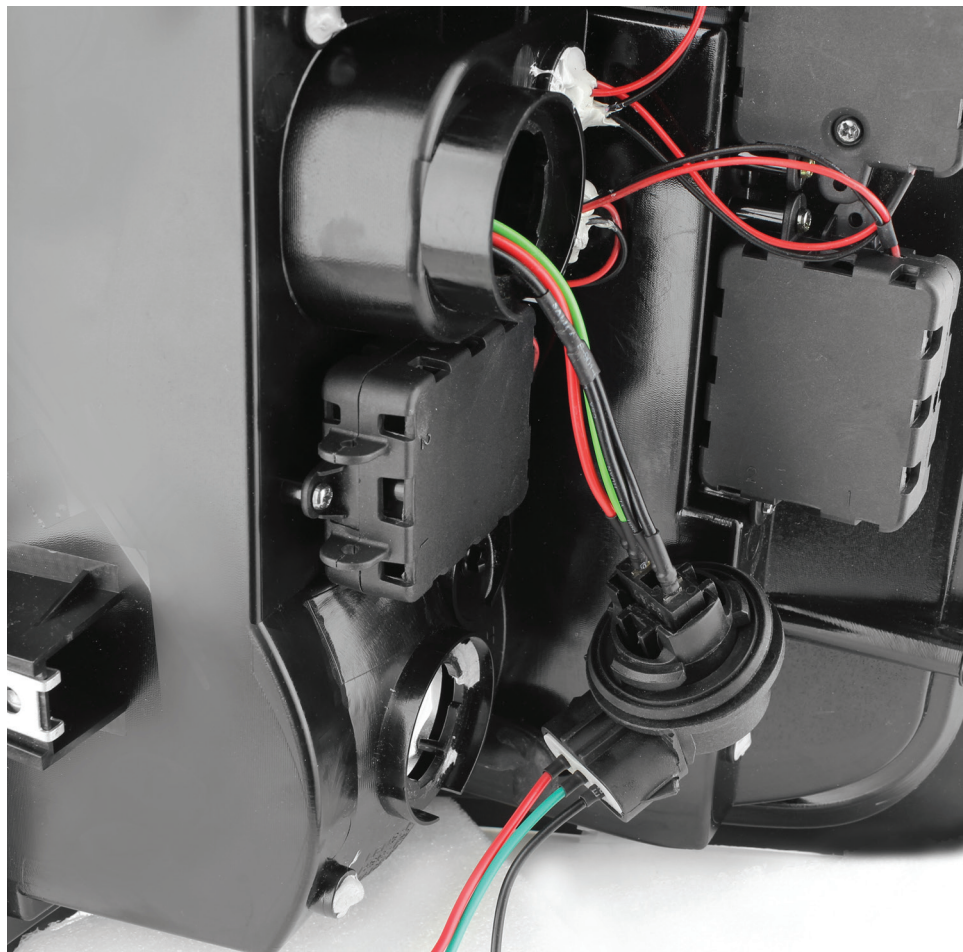
- No se garantiza que la parte ajuste correctamente si el vehiculo fue dañado anteriormente.
- Para prevenir daños a la luz nunca deje el lente hacia abajo.
- No trate de modificar o abrir cualquiera de nuestros productos ya que esto invalidara su garantia.



Esta es una muestra de la conexión de las luces LED, Cual queda y ajusta al igual que un foco original.

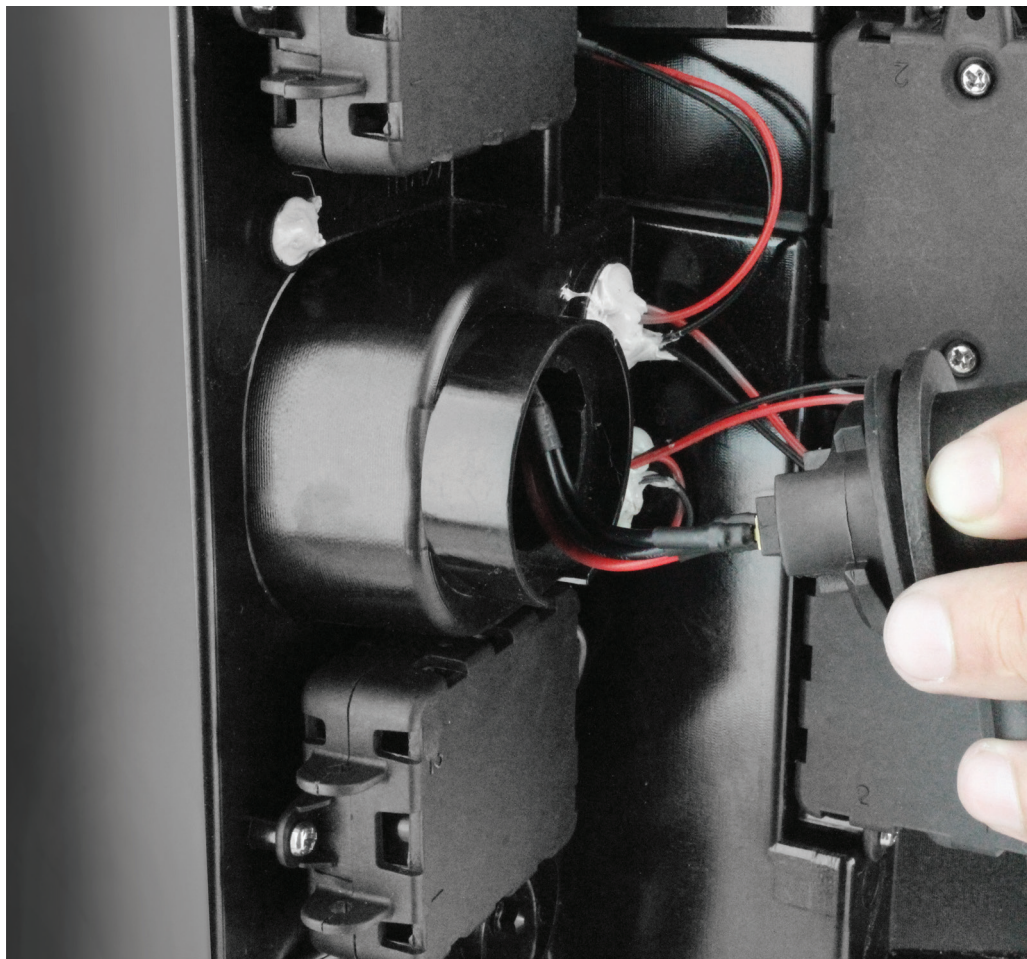


Favor de Conectar el cable negro con negro a la hora de instalar.

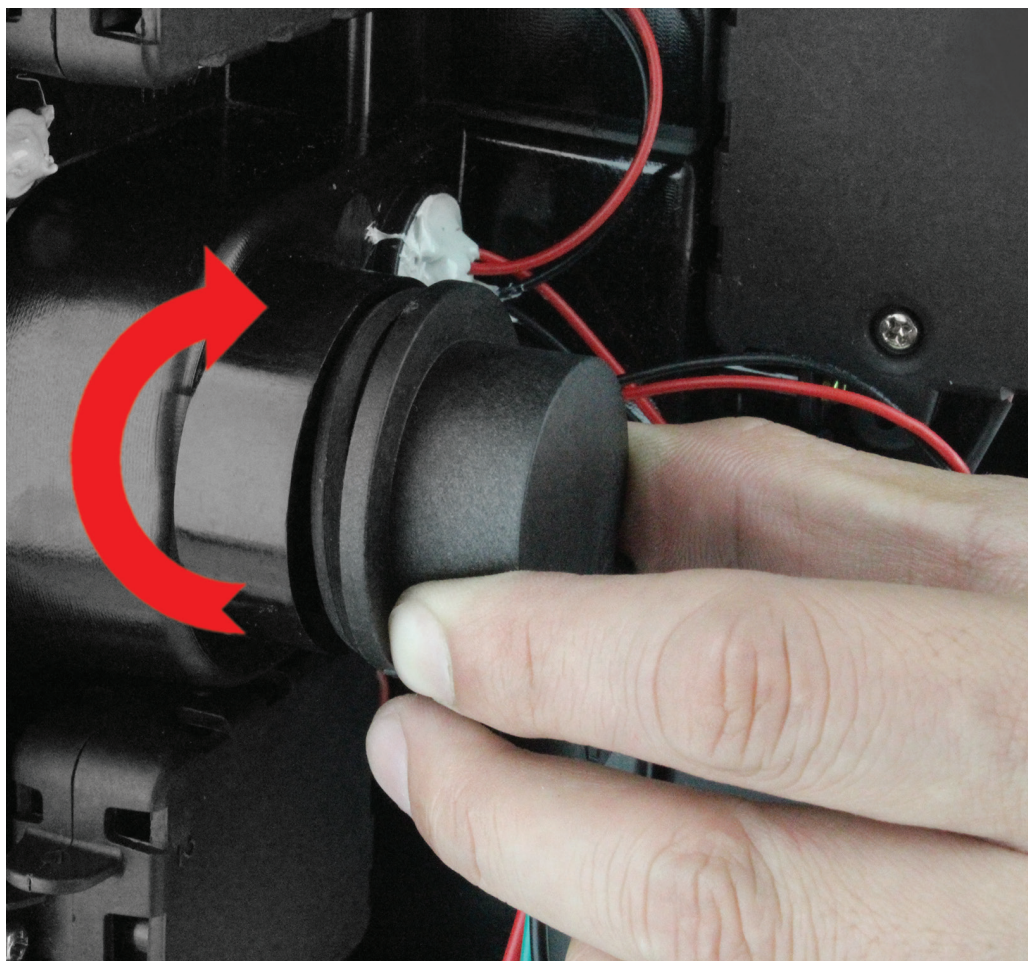


**Despues de haber conectado el conector de los LED al enchufe original asegurese que la conexion quede justa y no tenga juego**





**Antes de instalar el enchufe por favor asegurese que el empaque se encuentre correctamente instalado y en perfectas condiciones**



**Una vez que el empaque este bien puesto, instale el enchufe en su nueva luz LED y asegurese que quede completamente fijo.**



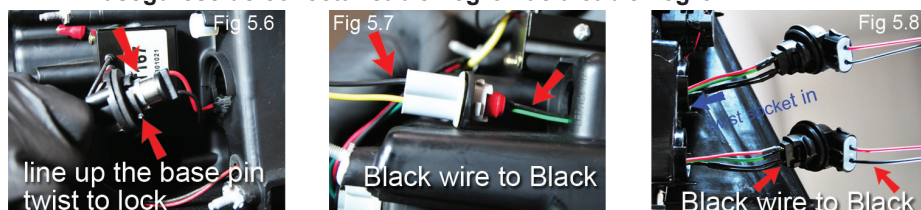
1. Usando guantes localice: el bulbo de el freno, el bulbo de la señal, y el bulbo de la reversa.



2. Usando guantes: (Fig 5.2) gire los enchufes de los bulbos. (Fig 5.4 and Fig 5.5) saque el bulbo original y conecte las conexiones de su nueva luz LED a el enchufe original Fig 5.3, Gire a la izquierda para desaguar y derecha para asegurar



- Fig 5.6 Bulbos 1156 y 1157, Alinie las patas de los bulbos y gire..  
Fig 5.7 y 5.8 Bulbos 194 3157 y 7440 Enchufar el cable de la luz LED y asegurese de conectar cable negro hacia cable negro.



3. Cuidadosamente inserte los cables al interior de la luz LED y gire el enchufe hacia la derecha. (Asegurese que la conexion quede justa en la luz trasera :ED.Fig 5.2
4. Use bulbo de reversa original, almenos de que sea una loz con reversa LED.
5. La mayoría de luces traseras LED de Spyder Auto usan los LEDs como direccionales, almenos que la direccional de tu luz trasera LED no lo sea use su bulbo original.



# PRODUCT REGISTRATION

To learn more about Spyder Auto's warranty information and terms and conditions, please visit :

[www.spyderauto.com/terms](http://www.spyderauto.com/terms)



**SPYDER™**



Follow Spyder Auto's Social Media



[facebook.com/SpyderAuto](https://facebook.com/SpyderAuto)



*Instagram*

[instagram.com/SpyderAuto](https://instagram.com/SpyderAuto)



*twitter*

[twitter.com/SpyderAuto](https://twitter.com/SpyderAuto)

Register your product on line at [www.spyderauto.com/registration](http://www.spyderauto.com/registration)

or by mail : Product Registration Card

Mail to: **Spyder Auto**  
19395 E. Walnut Dr. North  
City of Industry, CA 91748

Name

Phone

Email Address

Year

Make

Model

Place of Purchase

Date of Purchase

Item #

Product Description

## PRODUCT REGISTRATION

Si desea mayor informacion sobre su garantia favor de visitar nuestro sitio de internet:

[www.spyderauto.com/terms](http://www.spyderauto.com/terms)



**SPYDER™**



siganos en linea:



*Instagram*



[facebook.com/SpyderAuto](https://facebook.com/SpyderAuto)

[instagram.com/SpyderAuto](https://instagram.com/SpyderAuto)

[twitter.com/SpyderAuto](https://twitter.com/SpyderAuto)

registre su producto en linea en [www.spyderauto.com/registration](http://www.spyderauto.com/registration)

o por correo : Tarjeta de registracion de producto

direccion postal: **Spyder Auto**  
**19395 E. Walnut Dr. North**  
**City of Industry, CA 91748**

Nombre Apellido Telefono

Correo Electronico

Año Marca Modelo

Lugar De Compra Fecha de Compra

Numero De Parte Descripcion de Producto



# SPYDER™

PERFORMANCE LIGHTING



DEFINE YOUR STYLE





**SPYDER<sup>TM</sup>**

DEFINE YOUR STYLE



FAN, SUBSCRIBE AND FOLLOW TO CONNECT WITH OTHER  
SPYDER FANS AND STAY INFORMED.

[WWW.SPYDERAUTO.COM](http://WWW.SPYDERAUTO.COM)

